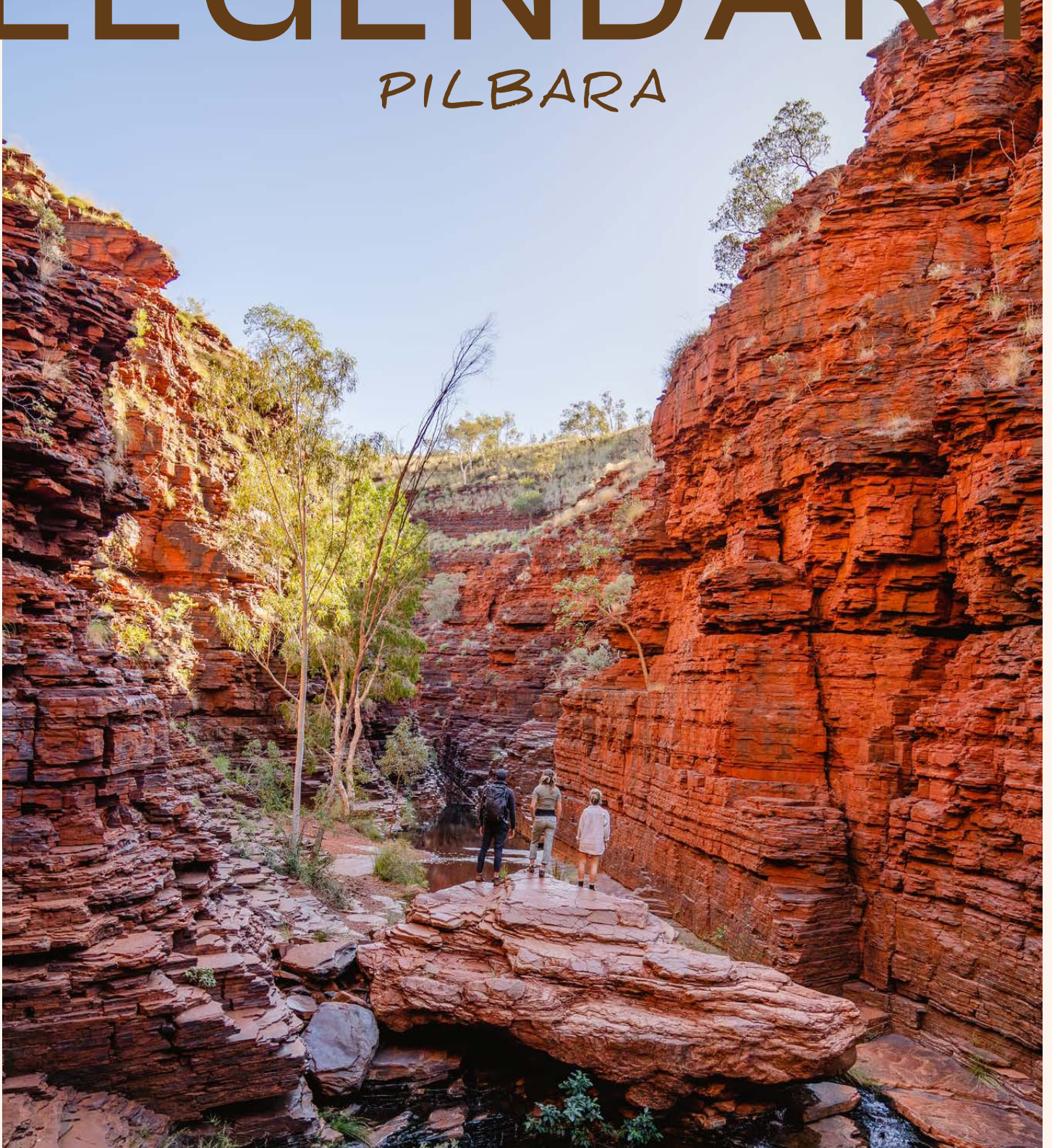


LEGENDARY

PILBARA



Inspiration for your legendary Warlu Way holiday



♀ YABURRARA - KARRATHA

TROPICAL BLUES.
BLEACHED WHITES.
ANCIENT OCHRES.
SUNNED GREENS.
EARTH TO OCEAN.
FEELINGS GUARANTEED.

There's nothing like knowing a local when it comes to having the best experiences in your holiday destination, so we've done all the hard work for you. Whether you self-drive, fly-in, fly-out or take a tour in the Pilbara, you'll find the inspiring experiences you can have along the Warlu Way's four driving routes. What's more, we've curated a selection of 'must do's' for your itinerary. We think you'll be surprised by what's waiting for you here. Start planning your journey with one of the routes below. After all, the journey is yours; all you need to do is decide how you'd like to take it.

CONTENTS

NATURE WAYS	8
SLEEPOVER WAYS	15
FOODIE WAYS	23
CULTURE WAYS	31
COASTAL WAY	39
GEO-HERITAGE WAY	67
INLAND WAY	95
MANUWARRA RED DOG WAY	139
HELPFUL TIPS	161

AUSTRALIA'S NORTH WEST TOURISM ACKNOWLEDGES THE TRADITIONAL CUSTODIANS THROUGHOUT THE KIMBERLEY AND PILBARA AND THEIR CONTINUING CONNECTION TO THE LAND, WATERS AND COMMUNITY. WE PAY OUR RESPECTS TO ALL ABORIGINAL PEOPLES; ELDERS PAST, PRESENT AND EMERGING.

A LEGENDARY ANCIENT LANDSCAPE TO DRIVE. FOUR LEGENDARY WAYS TO EXPERIENCE ITS STORIES.

The Warlu Way is a legendary road-trip holiday like no other. Many driving destinations often make this claim, but when you're in the ancient Pilbara landscape, you're truly on land that's some of the oldest on the planet - yes THE PLANET!

The Pilbara's rocks are preserved remnants of the earth's ancient crust more than 3.5 billion years old. Added to this, is the story of human development. The Pilbara is where some of the world's oldest petroglyph rock carvings share insights into life dating back to more than 40,000 years old - maybe even older.

The Pilbara's ancient geo-history is so significant, that in 2019 NASA scientists conducted investigations in the Pilbara to better prepare them for their future journeys to Mars.

More than just its age, the chemical similarities of the Pilbara's rock composition revealed, its rocks and the amount of iron in the Pilbara is amazingly similar to Mars, which is why it's known as the Red Planet. It's pretty cool that we share this in common. We say yeah, but we've got many more incredible experiences than a holiday on Mars offers.

Inside your copy of Legendary e-Mag, we've put together all the 'must-do' things along the four Warlu Way routes. There are the iconic experiences like exploring Karijini National Park to the hidden oasis rockpools. And of course where to find a great meal and cold beer.

We can't wait to see you in the legendary ancient Pilbara as you road-trip along the Warlu Way.

The Australia's North West Team.

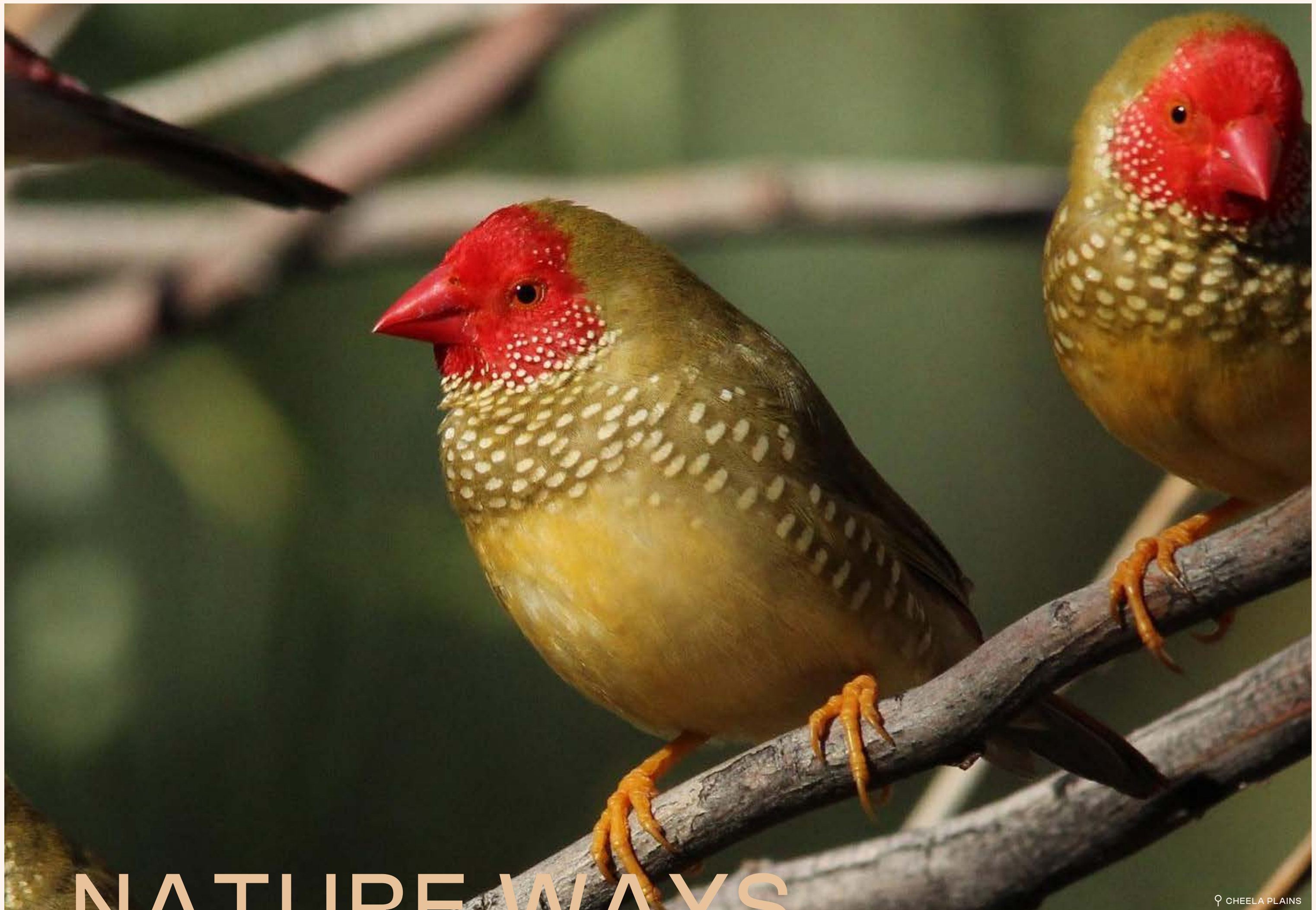




OUR WARLU WAY 'MUST DO'S.

- 80 mile beach for its aqua blue waters and sun-bleached white sand.
- Watch the sun set over the Indian Ocean and time your trip to see the Staircase to the Moon.
- Head offshore for a fishing trip, jetski and kayak tours.
- Chill out in Karratha at its local craft brewery.
- See the famous Red Dog memorial and learn his story in Dampier.
- Explore Karijini National Park for its stunning gorges, fern-lined oasis rockpools and hiking its breathtaking mountain views.
- Head to Millstream Chichester National Park for its epic open spaces, rockpools and rich history.
- Make your way to Cheela Plains to experience a true outback station stay and be sure to stop into the on-site cafe and taste their famous carrot cake.
- Head to the Mackerel Islands and Dampier Archipelago, for its sea turtles, dolphins and snorkelling among colourful fish and stingrays.
- Visit Newman for its dynamic and colourful Aboriginal art at Martumili Gallery.
- Head to Port Hedland for its 'land of the industry giants' and stunning salt plains.

For even more must do ideas and inspirational things to experience, keep browsing the e-mag.



NATURE WAYS.

LEGENDARY NATURE THAT YOU'LL JUST LOVE.

Nature comes in all shapes and sizes along the Warlu Way - feathered, finned and furred forms. There's the leafy and floral types, plus the odd scaly ones too.

From coast to remote outback, you'll be sure to meet our beautiful Warlu Way nature ambassadors, even if they're a bit shy to start with. If you're patient and quiet, they'll say a Warlu Way g'day and introduce themselves.

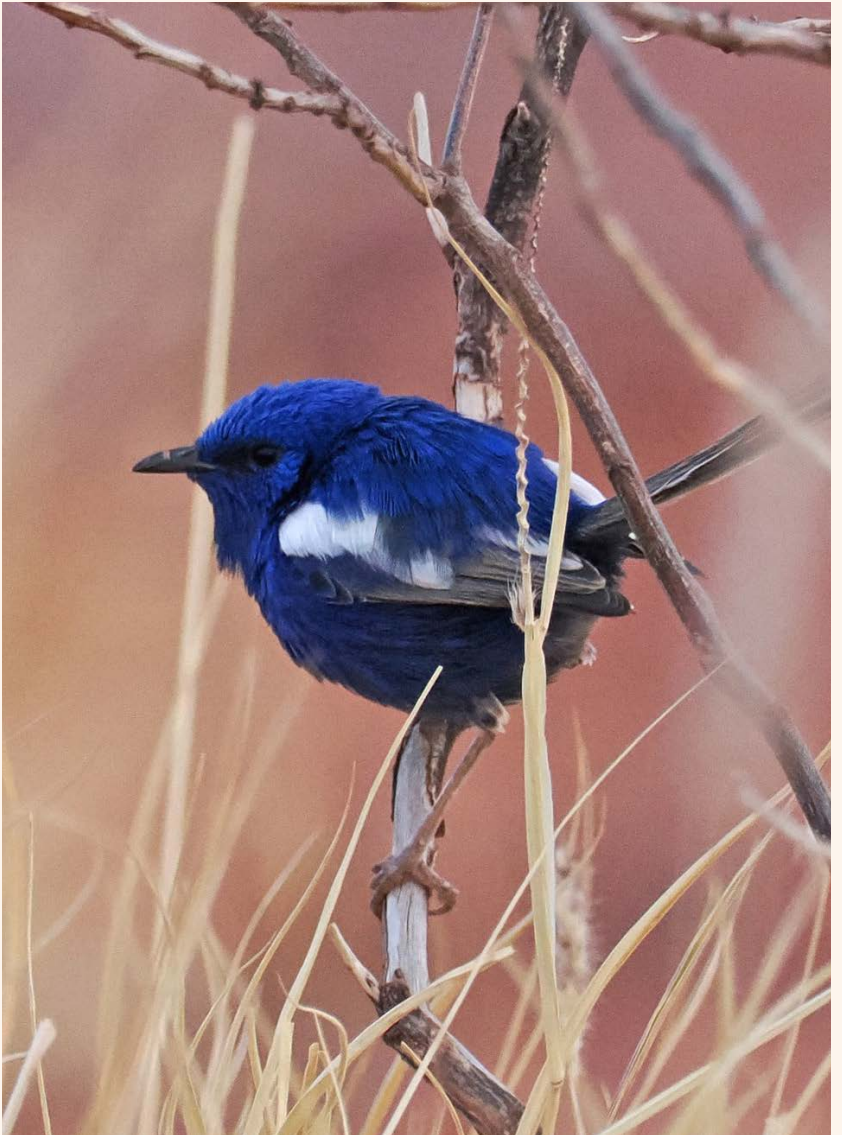
Along the Coastal Way and offshore around the Mackerel Islands and Dampier Archipelago, you can get up close and personal with sea turtles, dolphins and snorkel among colourful fish and even stingrays.

Back on dry land, The Karijini National Park is home to diversely beautiful grasslands, forests and pockets of seasonal wildflowers. The park has over 500 species of native flora, including some rare species. From June to September each year, the Pilbara's wildflowers pop into bloom, including the purple mulla mullas and Karijini wattle.

You also might have surprise catch-ups with a wide range of native wildlife. There are over 125 species of birds in the park. But you're sure to see many of them across the Warlu Way.

NASA SAYS IT'S JUST LIKE MARS...
WE SAY, YEAH BUT WITH BUDGIES.







SLEEPOVER WAYS.

LEGENDARY IDEAS TO ENJOY WARLU WAY SLEEPOVERS.

Whether you love sleeping under the galactic cosmos where it's just you and nature, or you prefer some extra comforts, we've got some great suggestions.

Take your pick from isolated outback remoteness, oasis rockpools, riverside camps, station stays, national parks campsites, coastal resorts, pubs and island beach getaways.

NASA SAYS IT'S JUST LIKE MARS...
WE SAY, YEAH BUT WITH GLAMPING.



KARIJINI ECO RETREAT



♀ CHEELA PLAINS



♀ MACKEREL ISLANDS



♀ KARIJINI ECO RETREAT



♀ MIAREE POOL



♀ EIGHTY MILE BEACH CARAVAN PARK



♀ PEEDAMULLA CAMPGROUND



♀ PEEDAMULLA CAMPGROUND



♀ ONSLOW BEACH CLUB



♀ RAYS - PORT HEDLAND



FOODIE WAYS.

ILUKA'S KITCHEN - PORT HEDLAND

LEGENDARY IDEAS FOR FULL TUMMIES AND QUENCHED THIRSTS.

We're going to surprise you with your choices of dining and drinks experiences along the Warlu Way.

Sure you'll find your classic country fare of steaks, schnittys, burgers and chips. But don't forget we have some of the best freshly caught seafood in Australia. And our pub fare also includes tacos and even regional WA's award winning best loaded steak sarnie, all are jammed full of mouth-watering flavours. Have a treat and enjoy our local restaurants who serve up a quality fare of hearty deliciousness.

When it comes to quenching your thirst, we've got plenty of ice cold beer and a cool coastal craft brewery - North West Brewing in Karratha. We also offer a great range of Western Australia wines too.

For coastal sundowners or brekky, lunch and dinner with a view, take a seat a Soak for Dampier's finest food and drinks.

One of the biggest surprises are the cakes and pastries, especially at the Cheela Plains Red Plains Café. It's a 'must do' for travellers on the Warlu Way Inland route between Ningaloo and Karijini. You'll enjoy meals prepared by their two experienced and world travelled Estonian chefs who cook up storm of sweet and hearty country-style savoury meals.

Plus, there are supermarkets in most towns. They'll help you stock-up so you can do your own outback master-cheffing and enjoy your delights in the ancient nature of the Pilbara.

NASA SAYS IT'S JUST LIKE MARS...
WE SAY, YEAH BUT WITH STEAK SARNIES.





KARRATHA



NEWMAN



KARIJINI ECO RETREAT



ILUKA'S KITCHEN - PORT HEDLAND



♀ LUCE - KARRATHA



♀ PILBARA BAKEHOUSE - KARRATHA



♀ CHILL - NEWMAN



♀ SEASONS STEAKHOUSE - NEWMAN



CULTURE WAYS.

LEGENDARY HERITAGE, ART SCULPTURE AND CULTURE.

The Warlu Way cultural stories are of legendary contrasts in which you really do experience time travel back to the past.

You'll be swept back tens of millions of years ago, as you walk on and feel the ancient textures of the Pilbara's red lands.

Fast forward to witness some of the world's oldest petroglyph rock carvings of life dating back to more than 40,000 years old - maybe even older.

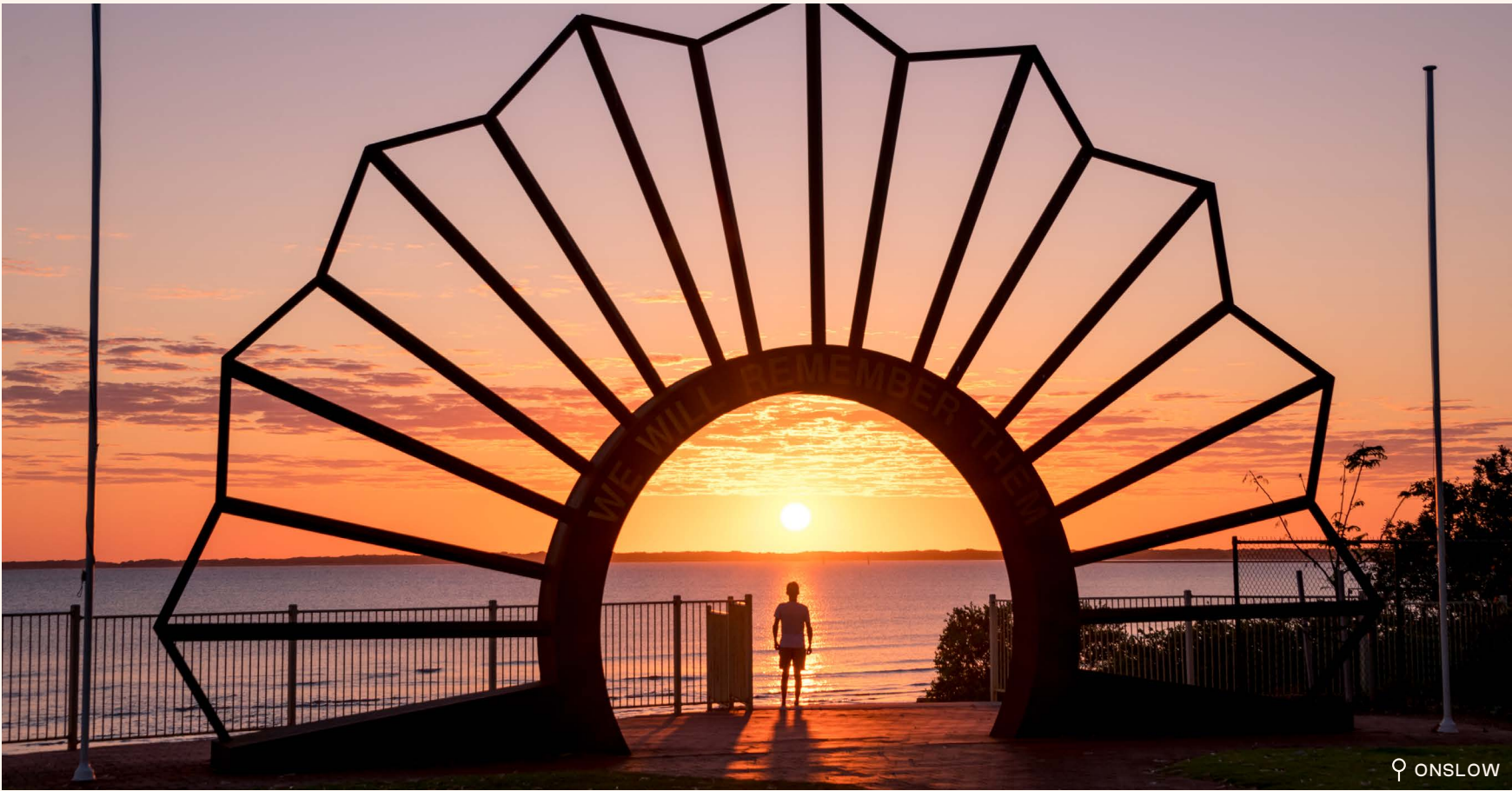
Then find yourself seeing local stories of life through colourful art by the Martu people who live in and around the communities of Parnpajinya (Newman), Jigalong, Parnngurr, Punmu, Kunawarritji, Irrungadji and Warralón.

The artists and their families are the traditional custodians of vast stretches of the Great Sandy, Little Sandy and Gibson Deserts as well as the Karlamilyi (Rudall River) area and love sharing their vibrant stories in pops of colour.

And finally, you'll be in the present with the Warlu Way's contemporary stories being told through modern sculpture and industrial art that you'll come across during your travels. They make dramatic photos, especially at sunset.

NASA SAYS IT'S JUST LIKE MARS...
WE SAY, YEAH BUT WITH CULTURE.







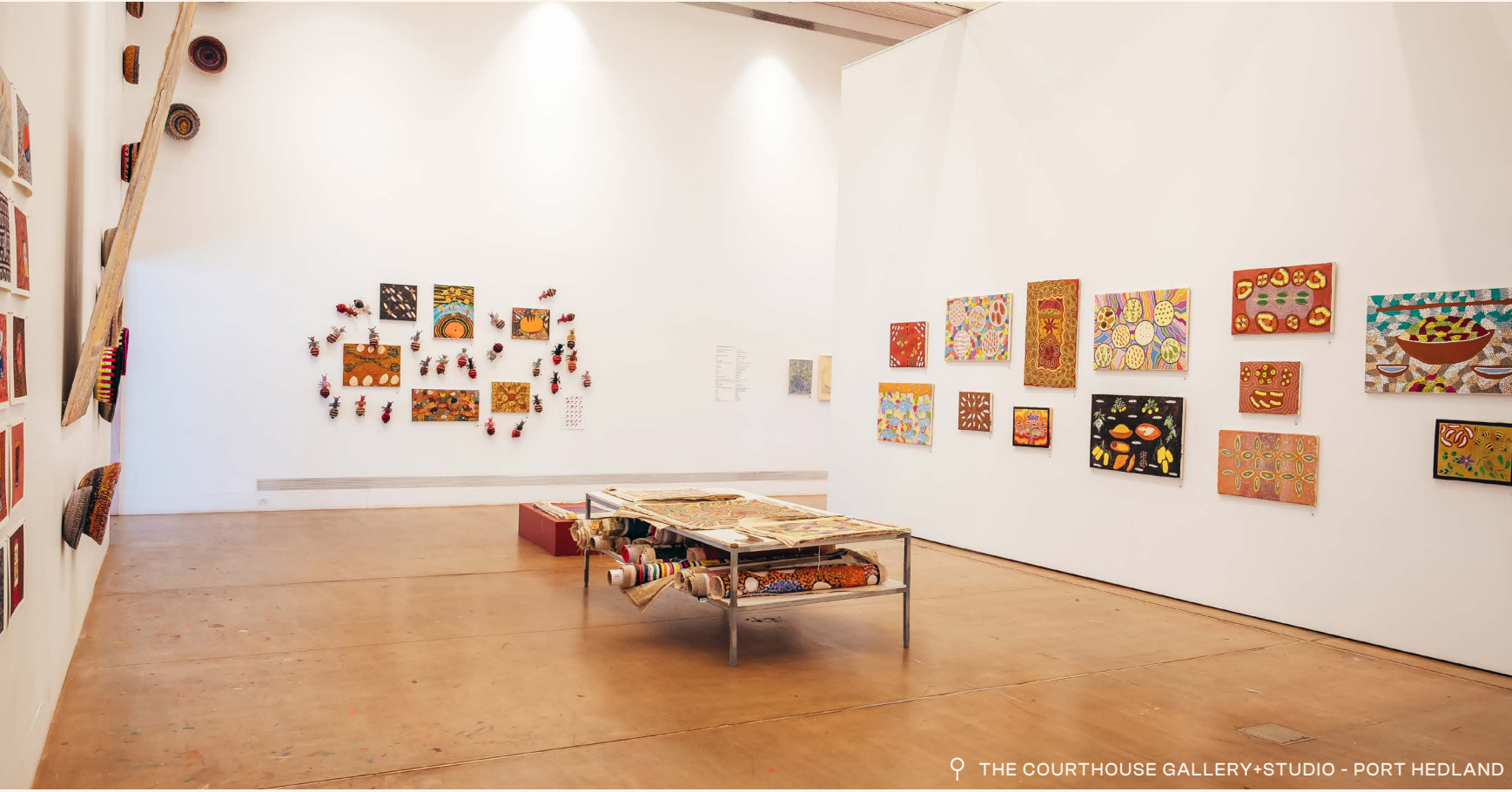
♀ GRATEFUL REMANTS - ROEBOURNE



♀ THE COURTHOUSE GALLERY+STUDIO - PORT HEDLAND



♀ THE COURTHOUSE GALLERY+STUDIO - PORT HEDLAND



♀ THE COURTHOUSE GALLERY+STUDIO - PORT HEDLAND



♀ COSSACK



♀ PUNDA, OPHTHALMIA RANGE





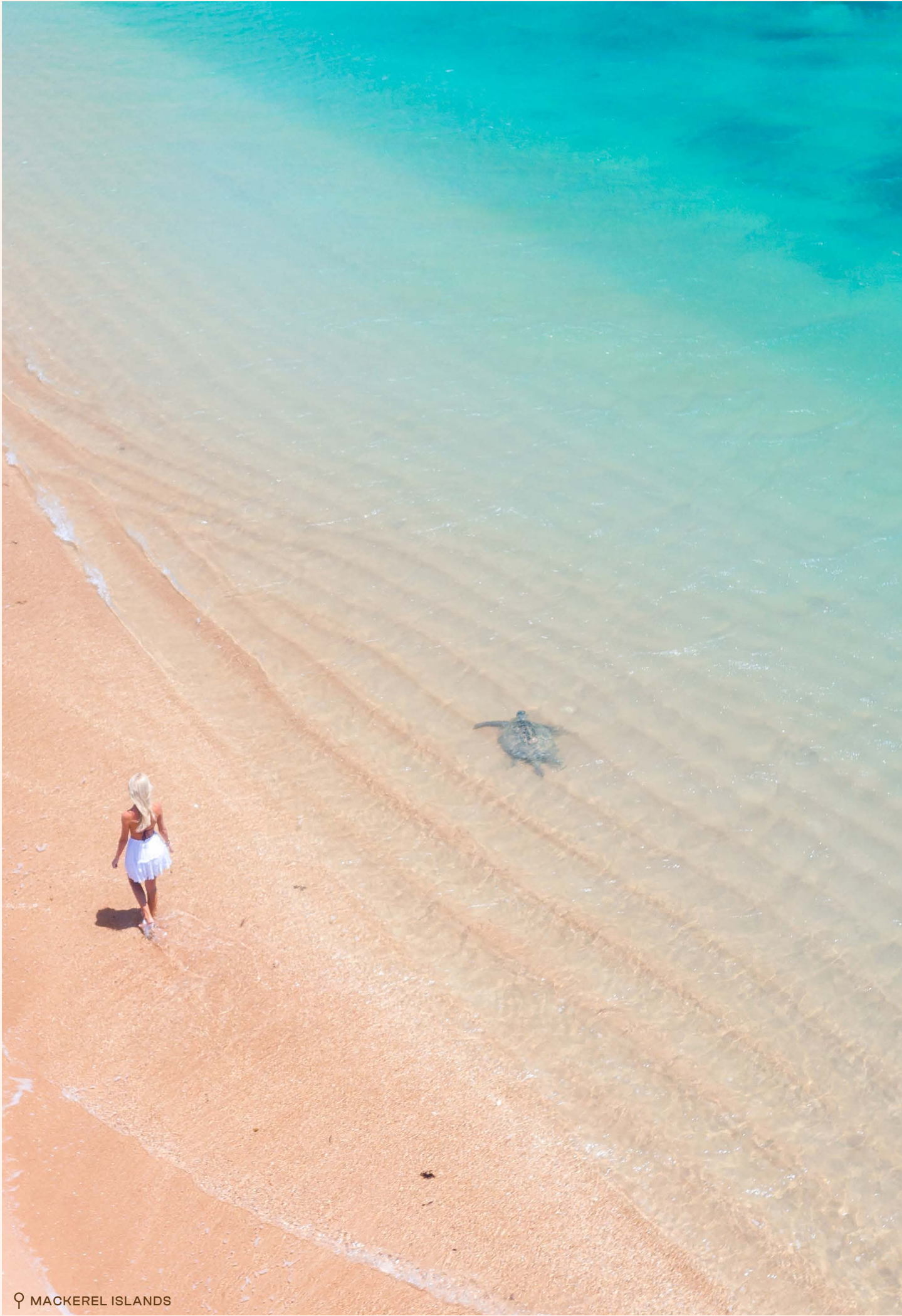
THE COASTAL WAY.



THE COASTAL WAY.

You won't find beaches, crystal aqua seas and marine life on Mars that's for sure. What you'll experience along the Warlu Way's Coastal Route and offshore, will simply leave you breathless. We've put together 17 ideas to experience during your road trip.

THE WARLU COASTAL WAY COVERS THE STUNNING PRISTINE COASTLINE FROM ONSLOW, KARRATHA, DAMPIER ARCHIPELAGO, PORT HEDLAND AND CAPE KERAUDREN COASTAL RESERVE.



17

COASTAL WAY THINGS YOU MUST DO.

1.

HAVE A BEACH DAY OR FIVE.

Find a spot all to yourself, have a picnic, swim and paddleboard in crystal clear waters where you might even see turtles gliding past.
2.

ESCAPE OFFSHORE TO THE MACKEREL ISLANDS.

Get up close and personal with sea turtles, dolphins and snorkel among colourful fish and stingrays. Love fishing? Reel in the catch of your life or simply chill soaking up the serenity of the sea.
3.

HAVE ISLAND SLEEPOVERS.

Choose a stay on Thevenard Island, part of the Mackerel Islands. Take your pick of 2, 3 and 5 bedroom beachfront cabins. You'll love the isolated seaside wilderness they offer.
4.

VISIT EIGHTY MILE BEACH.

Insta yourself at famous Eighty Mile Beach and enjoy fishing and camping at Cape Keraudren, or at Eighty Mile Beach Caravan Park

Get up close and personal with sea turtles, dolphins and snorkel among colourful fish and stingrays when you visit the Mackerel Islands.



♀ MACKEREL ISLANDS



♀ MACKEREL ISLANDS



♀ MACKEREL ISLANDS

5.
VISIT A WORLD FAMOUS ANCIENT
ROCK ART GALLERY.

The highest concentration of petroglyphs rock engravings of any known site in the world is located within the Murujuga National Park on the Burrup Peninsula. With Aboriginal people living there for more than 50,000 years the engravings (petroglyphs) have been estimated to be as old as 40,000 years. The petroglyphs are diverse, depicting a record of human figures and birds, to marine life and extinct creatures, the art provides an insight into an ancient world.



BURRUP PENINSULA



6. HAVE SOME NATURE
MEET UPS.

The Burrup Peninsula has 30% of all the plants and animals that live in the Pilbara. You'll see the northern quoll, Rothschild's rock-wallaby, echidnas, common rock rat and the pettily named delicate mouse. Shady valleys contain temporary pools, and provide interesting wildlife homes such as for the Pilbara olive python who live amongst the rocks.

7. GO SNORKELLING, DIVING
AND FISHING OFFSHORE.

Head out to the Montebello Islands Marine Park. It covers an eye-watering more than 58,000 hectares of ocean and has over 250 low-lying limestone islands and islets. Its coral reefs, colourful tropical fish, wildlife and maritime heritage are a paradise for fishers, snorkellers and divers. FYI, trips to the islands depart from Dampier and Onslow.

8. CAST A LINE ALONG
THE COAST.

The fish are always biting along the Warlu Way coastal route. A popular spot is Point Sampson. Take your pick from John's Creek Harbour, Sam's Creek inlet and the causeway along the Roebourne/Point Samson Road. Point Samson Reef area is a popular offshore fishing spot - however, just be mindful to take note of the reef-protection zones.



DAMPIER ARCHIPELAGO

LEGENDARY ADVENTURES

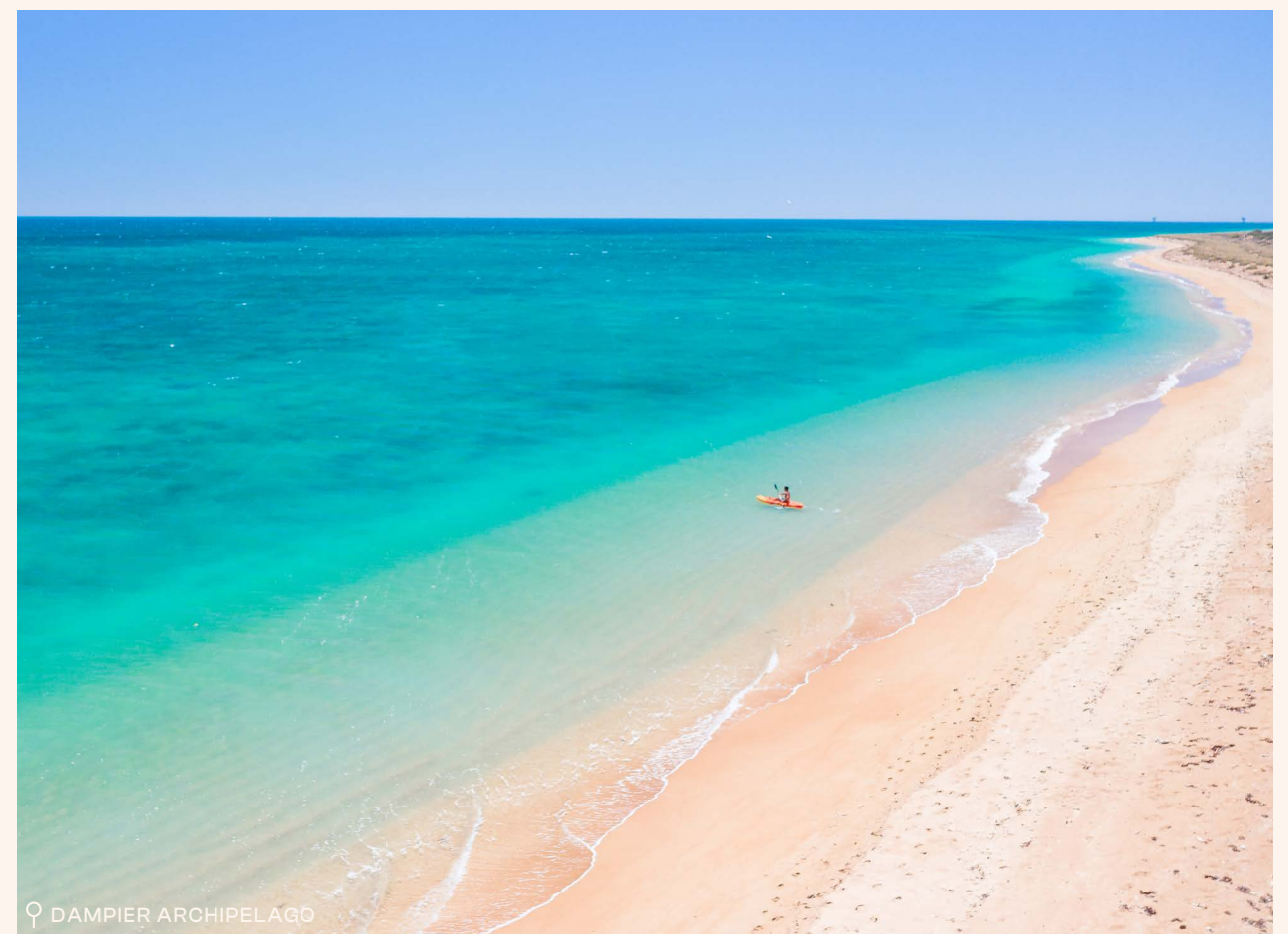
♀ DAMPIER ARCHIPELAGO

9. BE A DAMPIER ARCHIPELAGO NATURE EXPLORER.

With 42 islands and islets in the Dampier Archipelago to explore, the chances of you running into another person are minimal, giving you the opportunity to unwind and discover the coast's untamed wilderness. The archipelago is a haven of coral reefs, sponge gardens and more than 650 species of fish. It's also home to green, hawksbill, and flatback turtles, that nest on its beaches. Dugongs, whales and dolphins can also been spotted too. Island wildlife includes wader birds and wallabies.

10. DO A DAMPIER ARCHIPELAGO DAY TRIP.

Take a day trip to enjoy a tour, dive and snorkel or just while away the hours on your boat amongst the islands, of which 25 are nature reserves. Many of the islands are perfect for day trips. While there are no facilities, camping is permitted on some of the islands such as Enderby, Eaglehawk, Dolphin and Gidley Island. Here's an awesome experience - Here's an awesome experience - join a guided jetski or kayak tour of the islands to explore



♀ DAMPIER ARCHIPELAGO



♀ MACKEREL ISLANDS



LEGENDARY FISHING

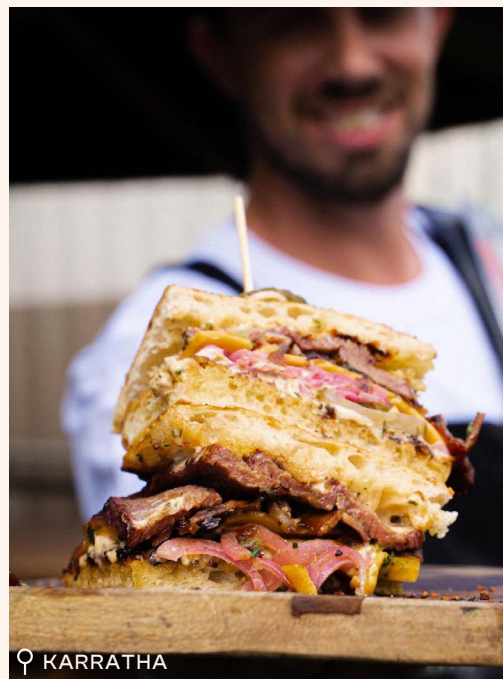
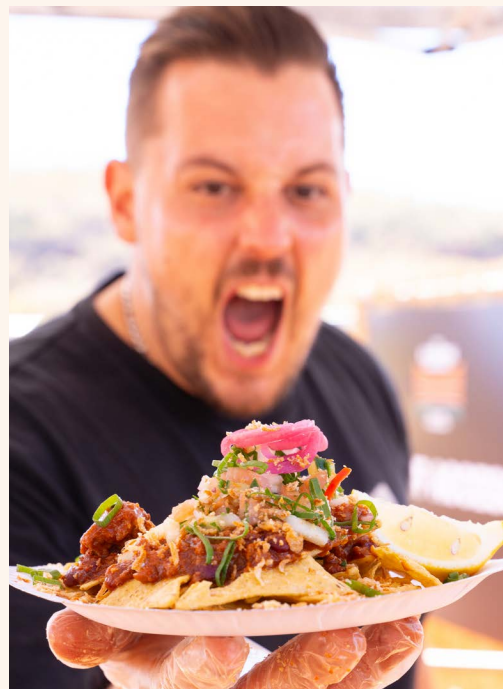


♀ DAMPIER ARCHIPELAGO

11.
GRAB A CRAFT HOLIDAY BREW.
OR TWO.

Enjoy some locally brewed craft beer and delicious food at Karratha's only craft brewery, North West Brewing Co. It's a local institution. Chill out with a brew like their North West Draught, Sundowner Amber Ale or High Tide Pale.

They also have regular live music and special events like bottomless taco nights. And to prove they know their food, the team are two-time winners of regional WA's best steak sandwich. That's the winning beauty in the photo in the left corner below - yummo!



KARRATHA

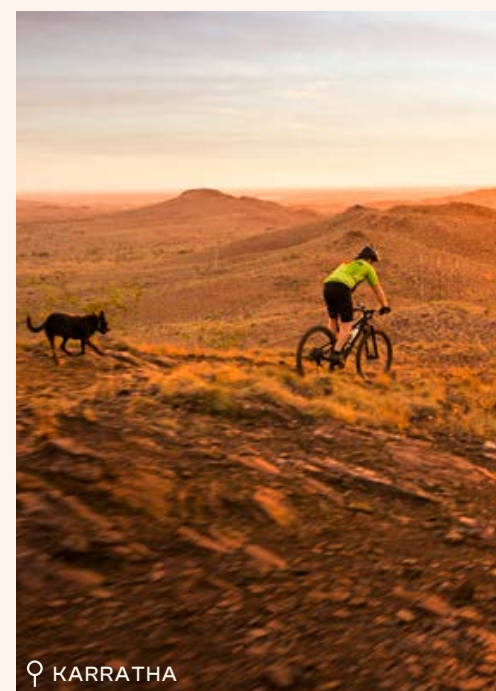


12.
MAKE KARRATHA YOUR
HOLIDAY BASE CAMP.

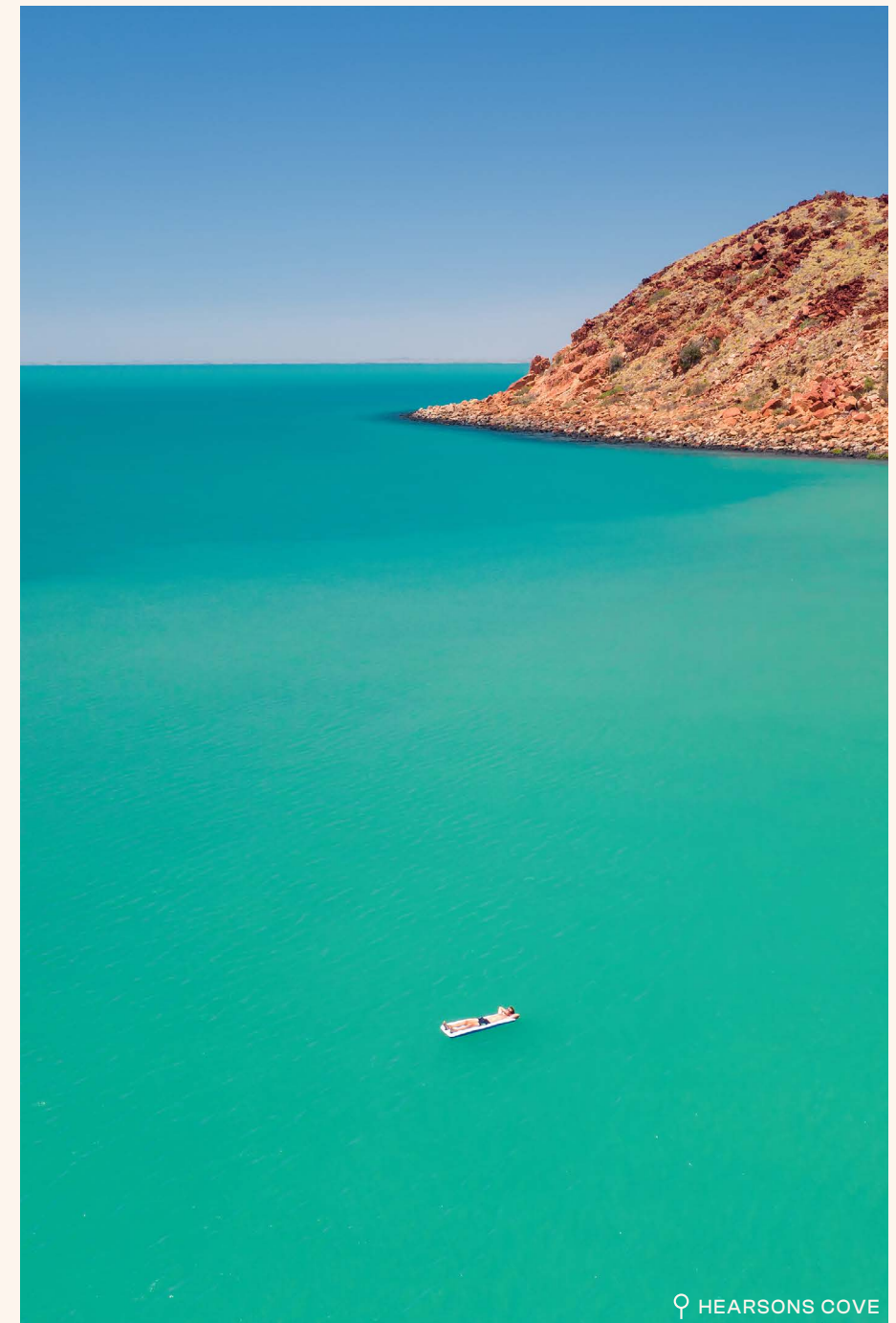
Karratha is the perfect holiday base for day trips. From there, the ancient Aboriginal rock engravings on the Burrup Peninsula, the picturesque Hearson's Cove beach and Dampier are all within a 30-40 minute drive. Just a 30 minutes drive is Cleaverville Creek, a fab fishing and camping spot. And the oasis of Millstream-Chichester National Park is a comfortable two hour drive from the town. You can also explore the historic town of Roebourne. Karratha has a cool food and drink scene to unwind once you're back in town.



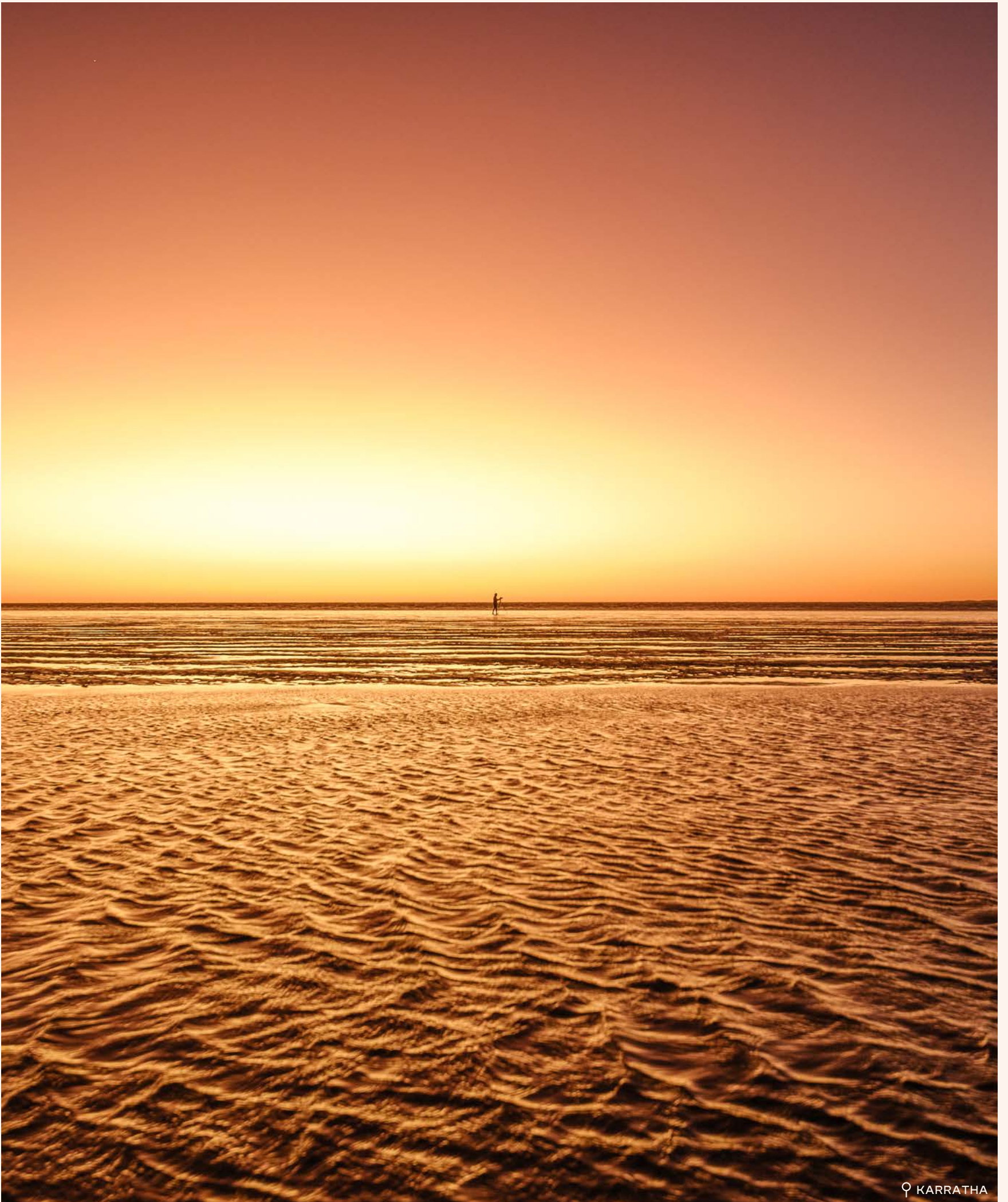
KARRATHA



KARRATHA



HEARSONS COVE





LEGENDARY DAMPPIER STORIES



13. DIG UP OLD STORIES IN ONSLOW.

Did you know Onslow is one of the few places where the sun rises and sets over water on mainland Australia? It's also the gateway to the Mackerel Islands. Unearth its fascinating history wandering through the remains of 'Old Onslow' such as the police station, cemetery and old jetty. It's a great place to see the mighty Ashburton River. As you drive into town, take a look at the salt evaporation ponds which cover 87 square kilometres!

14. SEE DAMPIER'S RED DOG MEMORIAL AND MORE

Here's a true Pilbara icon that you must experience. Dampier is home to the 'Red Dog' memorial. He became a Pilbara legend for his series of owners and travelling on his own throughout the region, making mates along his many journeys. His memorial is on the way into town, and you can follow the Red Dog Trail to discover more about the North West's favourite canine and his remarkable story. Fun fact - Dampier is the largest tonnage shipping port in Australia and houses the massive export facilities of Hamersley Iron, Dampier Salt and the North West Gas Shelf Project. Dampier is also the departure point for day trips to the spectacular Dampier Archipelago. Take a day to explore Murujuga National Park, home to fascinating rock art.



ON SLOW

15.
SEE PORT HEDLAND'S BIG
AND COOL SIDES.

If you love big things, then switch to panoramic camera settings. Port Hedland is famous for its massive resource industry, long trains, big ships and giant salt piles. The mountains of bright white crystal salt make stunning sunset insta pics. And you can even join the Salt Industry Tour. Port Hedland is also rich in Indigenous culture, pioneering history and wildlife. It's a great spot for fishing and crabbing, whale watching and turtle nesting too.



16.
WALK PORT HEDLAND'S
HISTORY AND STREET ART TRAILS.

If you prefer to discover Port Hedland at your own pace, you can pick up a copy of the Cultural and Heritage Trail self-guided tour. It takes you around the West End's historic sites and buildings, telling you the story of the early Port Hedland days and the characters which helped build the town into what it is today. You'll also discover a cool and contemporary street art scene too.





17. SEE SUNSETS OF COLOUR CONTRASTS.

The sunsets in Port Hedland are really something else. For the best views, and also the most iconic sunset photos, head to Redbank Bridge. From one side, you can see the sun set behind the salt piles, with trains snaking past. The oranges, pinks and purples will reflect off the salt pools. On the flip side, you'll have a frame of the sun setting behind the red ore trains, giving you a unique memorable contrast between nature and industry that will take your breath away. What's more, you can also catch the famous 'Staircase to the Moon' from May to October.



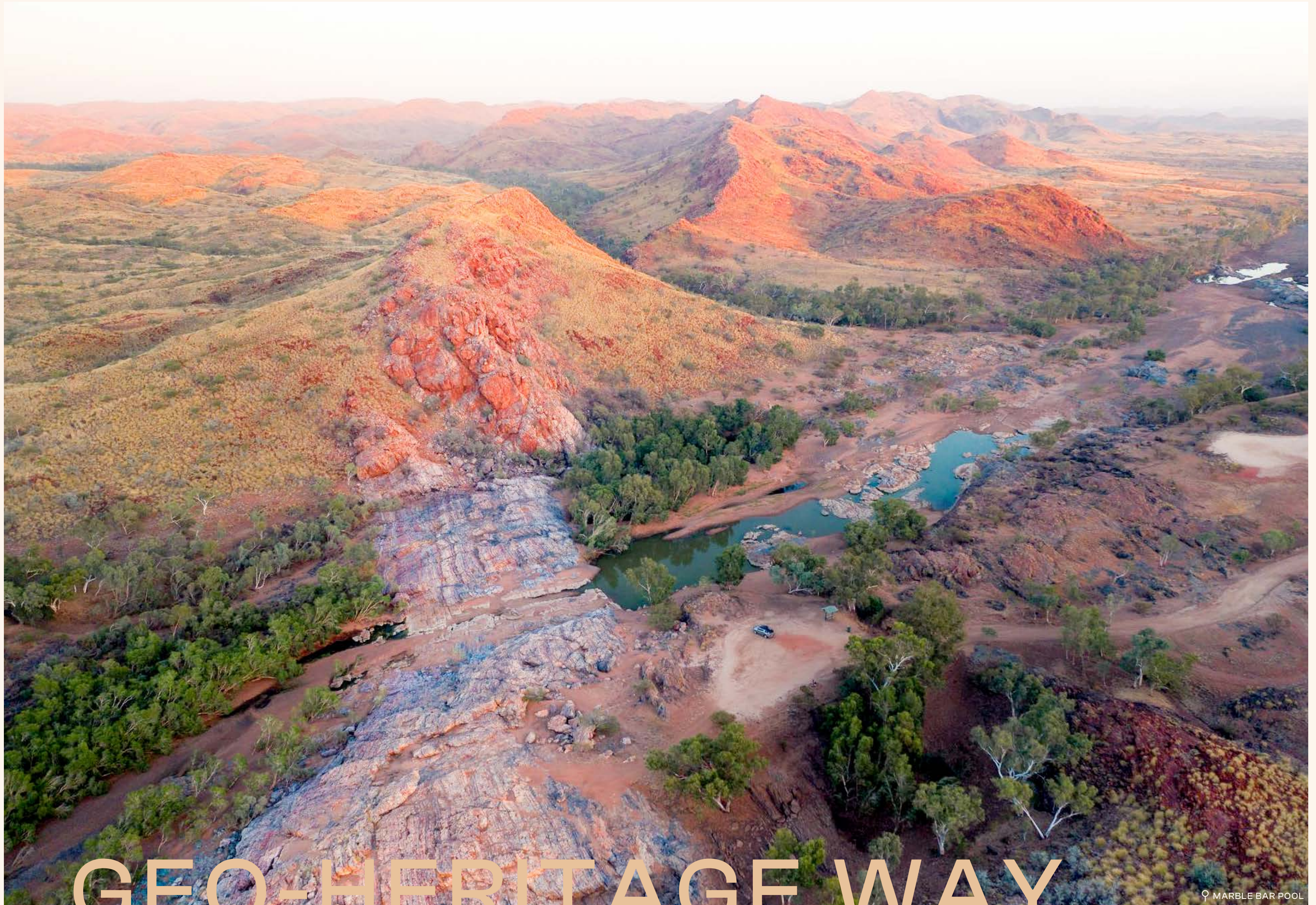
♀ NGURRANGGA TOURS, NEAR KARRATHA



♀ NGURRANGGA TOURS, NEAR KARRATHA



♀ CAPE KERAUDREN, EAST OF PORT HEDLAND



GEO-HERITAGE WAY.

📍 MARBLE BAR POOL



THE GEO-HERITAGE WAY.

Take a journey back in time to when the Earth began. Experience the Geo-Heritage Way's preserved remnants of ancient crust that's more than 3.5 billion years old and fossilised stromatolites, as well as early gold rush days, Australia's hottest town and Australia's resources heartland.

THE WARLU WAY GEO-HERITAGE ROUTE COVERS THE EAST PILBARA FROM NEWMAN, THROUGH TO NULLAGINE AND ONTO MARBLE BAR.



MARTUMILI GALLERY - NEWMAN

21

GEO-HERITAGE WAY THINGS YOU MUST DO.

1. DISCOVER THE HOME OF RICH RED RESOURCES.

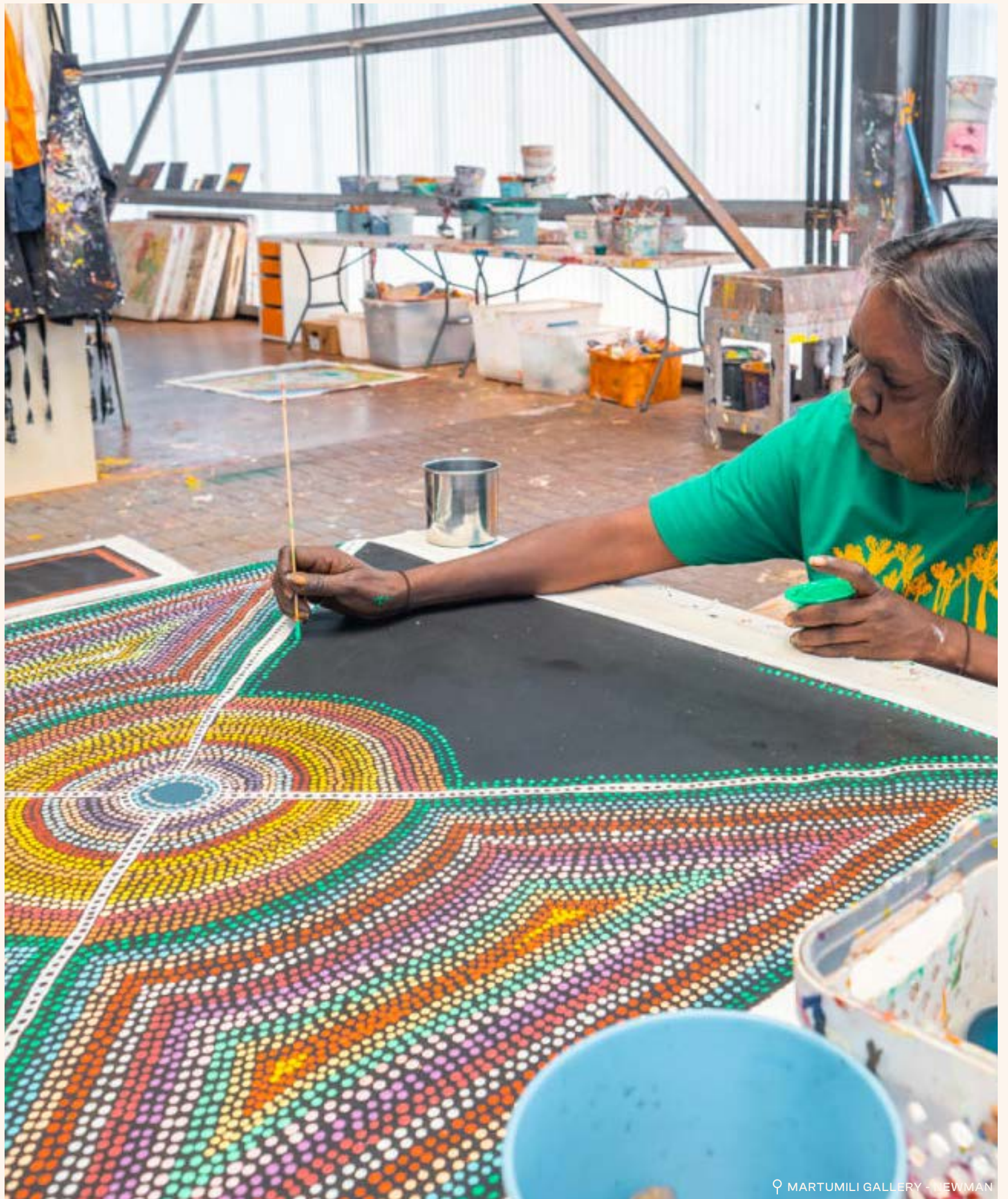
The Newman and the East Pilbara region have been a resources hotspot for over 150 years, ever since gold was discovered in the 1880's. Sitting on the edge of the Western Desert, the town is dominated by Mount Newman (1053 metres) and named after the explorer Aubrey Woodward Newman. In 1957 a huge iron ore deposit was discovered at Mt Whaleback, which is now the site of the largest single open-cut iron ore mine in the world.

2. HIKE MOUNT NEWMAN FOR GRAND VISTA VIEWS.

For grand views of the Ophthalmia Ranges and surrounding plains, hike to the top of Mount Newman just out of the town of Newman. It stands 1128m above sea level. You'll be in awe of the red rich colours of the landscape created by the presence of iron ore, which is mined nearby. Take the easy option via a 4WD track halfway up to the summit. Or hike from the base of the mountain at the highway. The hike can be challenging in places. Allow two hours from the four-wheel drive track, or four hours from the base and don't forget to take water too.

3. BE IN AWE OF EMERGING LOCAL INDIGENOUS ART.

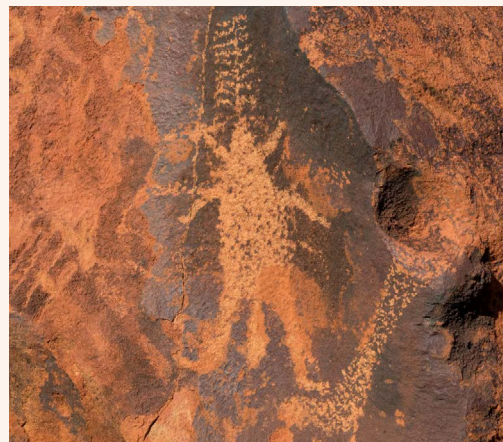
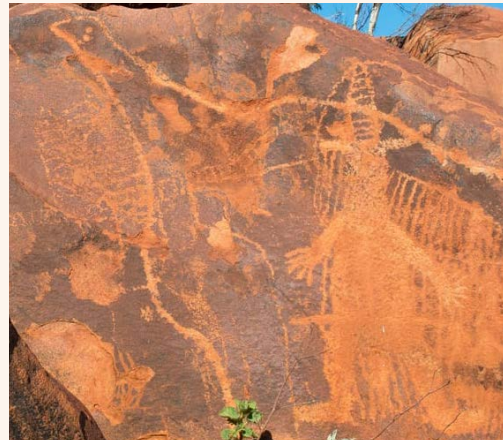
The Newman region produces some of Australia's most iconic and unique Aboriginal art. The Martumili Gallery located within the East Pilbara Arts Centre in Newman, is the best place to view current exhibitions and browse ethically sourced Aboriginal artwork and gift items. The gallery and its artists are rapidly establishing an international reputation for innovative and dynamic art. Their art has even adorned the Sydney Opera House.





4.
TIME TRAVEL TO 20,000
YEAR OLD ART.

The petroglyphs at Punda sweep you back in time in the development of the human story. Located in the Ophthalmia Range, it's thought some may be more than 20,000 years old, although they're actually undatable, but the boulders are said to be in the tens of millions of years in age. The ancient artistry shows stories of boomerangs, kangaroos, emus, human figures, spirit characters, animal tracks and symbols used for waterholes and camps. Being more remote than the petroglyphs at The Burrup Peninsula, Punda gives you a truly humbling experience of human existence.



♀ PUNDA, OPHTHALMIA RANGE



5. EXPLORE REMOTE 4WD
WILDERNESS.

For the advanced 4WD lovers, try the hugely challenging Canning Stock Route. If you're seeking true remote wilderness drive to Karlamilyi National Park (formerly known as Rudall River). Both the Canning Stock Route and the drive to Karlamilyi National Park are only for those who have extensive outback four-wheel drive experience. Permits to travel the Canning Stock Route are available from the Australian National Four Wheel Drive Council.

6. VISIT WA'S LARGEST AND
REMOTEST NATIONAL PARK.

Karlamilyi National Park is WA's largest, and most remote national park. It encompasses over 1.3 million hectares between the Great Sandy Desert and the Little Sandy Desert. Please note - The Department of Parks and Wildlife advises that visitors to Karlamilyi need to be well organised, have at least two vehicles with radio or satellite communications. You must be self-sufficient with all supplies and equipment including fuel, water, food, medical supplies etc. Visitors should not enter the area unless you're confident about navigation and driving in remote locations.

7. GO WILDLIFE
SPOTTING.

There's plenty for nature lovers around Newman. Weeli Wolli is a permanent freshwater spring providing a haven for fish and birdlife. Kalgans Pool is the perfect place for a cooling dip and the road to Eagle Rock Falls offers a great four-wheel drive adventure.



♀ WEELI WOLLI

LEGENDARY SUNSETS



8. GO KAYAKING, FISHING AND BIRD WATCHING.

Just 20 minutes from Newman, is Ophthalmia Dam. It's a great picnic, kayaking and canoeing spot. It's also a great place to observe bird life, with black swans often making the dam home. For the anglers, the dam has Spangled perch and the Fortescue Grunter, as well as other species of perch. The dam was constructed to recharge the underlying aquifer that supplies Newman's water supply, and is filled by the Fortescue River and Warrawanda Creek during the wet season. Please note - swimming is not allowed at Ophthalmia Dam.

9. TOUR THE WORLD'S IRON ORE MINES BRIDESMAID.

Check out the world's second largest single open cut iron ore mine. It was discovered in 1957 by veteran prospector Stan Hilditch, and was named Whaleback due to its resemblance to the shape of the humpback whale. You can take photos from the top of the pit and learn about the iconic mine site. Tours operate throughout April to September 4/5 days per week and less frequently in summer months. Private Tours can also be arranged for large numbers. For scheduled tour dates and bookings, contact the Newman Visitor Centre.



10.
HEAD INTO A METEOR CRATER WITH
DEEP IMPACT.

While going to Punda Pool and its rock art, you can also include seeing Hickman Crater. It was only discovered in July 2007 by Arthur Hickman when he was using Google Earth. Even though it's only 36km as the crow flies, it's actually going to take you about two hours to get there. There's access to it via the Marble Bar Road. The crater is almost circular with a rim diameter of 250-270 metres. The north, east and southern rims are uplifted 15-20 metres above the surround plateau surface and 20-30m above the flat crater floor.



HICKMAN CRATER

11.
HANG OUT AT THE HOTTEST PLACE
IN AUSTRALIA.

Marble Bar gets its name from what was thought to be a colourful Marble Bar that crosses the Coongan River. The rock is in fact jasper. Marble Bar was pioneered during the gold rush days so there are many fascinating and historical places to visit in Marble Bar. Be sure to take an insta posting photo in front of the town's iconic sunburst sign. Don't be put off by the heat though. From April to September the area enjoys mild daytime temperatures and cooler nights.



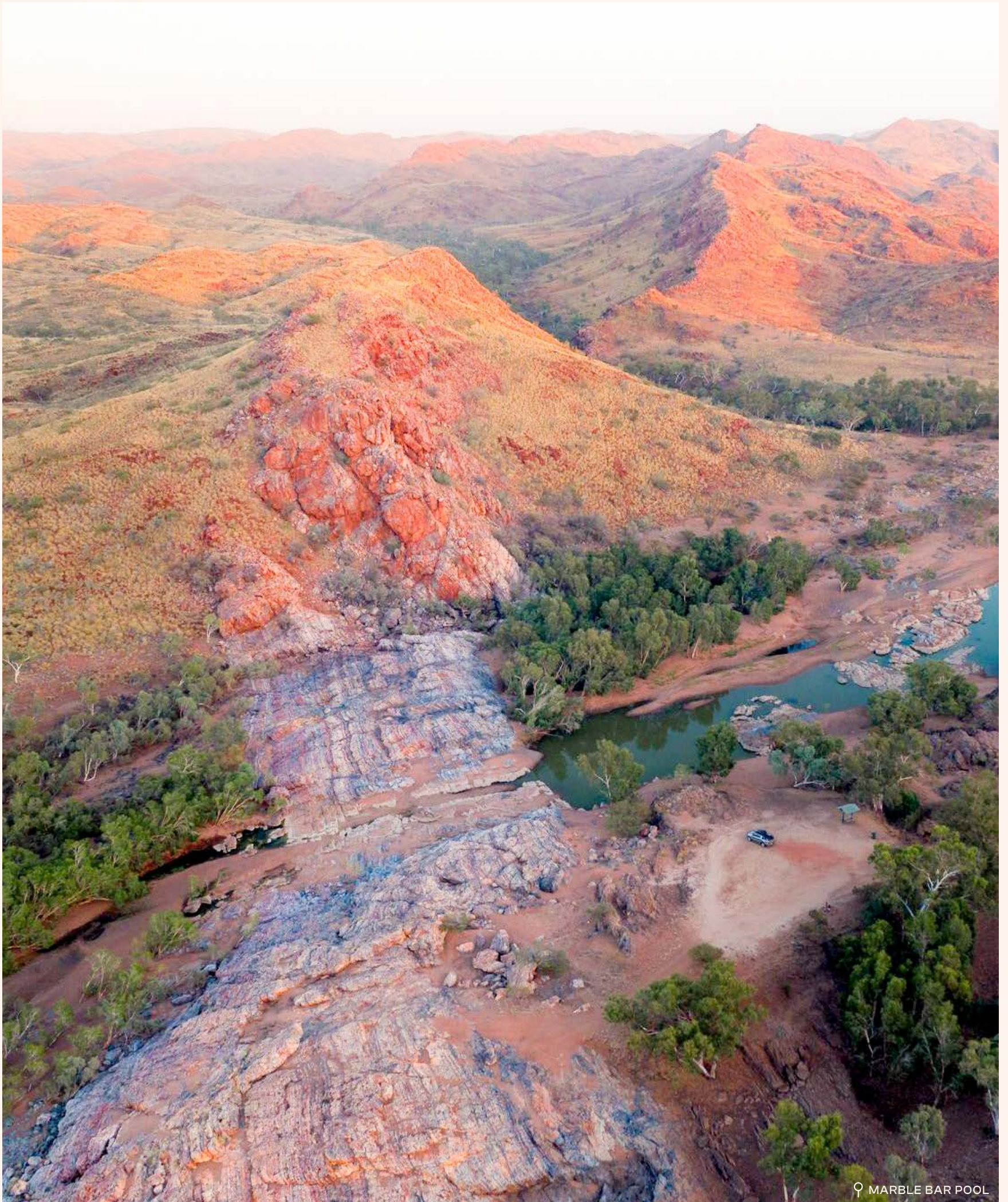
MARBLE BAR



♀ MARBLE BAR POOL



♀ MARBLE BAR POOL



♀ MARBLE BAR POOL

LEGENDARY CAMPING



♀ CARAWINE GORGE

12. MAKE A DATE WITH A HORSE AND UNDIE RACE.

Why not plan your visit to Marble Bar with the biggest event on the town's calendar? The Marble Bar Horse Race has been a classic outback social occasion since 1893. Join the locals as they gather at the red dirt racetrack to enjoy the country picnic race day atmosphere. Almost as historical as the town and race meet itself, is the famous 'undie run' race, held each year. Punters strip down to their briefs, and race 100m for a cash prize. Legendary!

13. CAMP AND SWIM AT A CRYSTAL CLEAR OASIS.

Carawine Gorge is a hidden gem popular with the Marble Bar locals. It's 174 kilometres east of Marble Bar and a bit off the beaten track but is worth the effort of finding it. Enjoy swimming or fishing in the crystal clear water. Or just enjoy some chill time and admire the abundant bird life and stunning sunsets. You're welcome to camp there. We recommended it's really only for 4WD and off-road campers and caravans to travel there.



♀ MARBLE BAR

14.
DISCOVER A HIDDEN RED JASPER
SCENIC GORGE.

Another hidden gem is the oasis of Coppin's Gap. This uniquely beautiful gorge is framed by a spectacular rock face lined with red jasper. Shaded by tall native trees, it's the perfect place of tranquility to enjoy a relaxing swim in the peaceful waters and soak up the natural scenic serenity.



📍 COPPINS GAP

15.
FIND THE SHINY GOLD AND GEMS
IN A COMET.

Call into the Comet Gold Mine and Tourist Centre near Marble Bar. You'll be dazzled by a fascinating selection of local gemstones, rocks and minerals. Its intriguing information displays share the stories of the pioneering gold mine and history, along with the towering 75 metre high smoke stack.



📍 COMET GOLD MINE



♀ NEAR NEWMAN



♀ EAGLE ROCK FALLS - JAMES CURRY



♀ THREE POOLS - JAMES CURRY

16. **WALK ONTO A SECRET
WORLD WAR TWO AIRBASE.**

During the peak of WW2, a secret airfield operated at the original Corunna Downs homestead site. It was the base for staging aircraft and personnel for raids on Japanese bases and shipping. Two bitumen runways of over 1,500m and 2,000m were built and the airfield was known as the “invisible airfield”. This was down to camouflaged buildings, as well as the natural heat haze which obscured the airfield from overhead. Over 200 operational heavy bomber sorties were flown out of Corunna Downs while it was operating. Now abandoned, it’s still a fascinating experience to see the crumbling foundations, fortifications outlines, and the runways that remain today. For visiting details, contact the Comet Gold Mine museum.

17. **TAKE A DIP AT THIS GORGE
AND SUNSET SPOT.**

When the De Grey River is flowing, Doolena Gorge is another beautiful spot for a shady picnic, a cheeky swim, and it’s always a top place to watch the sunset. The gorge also has a seasonal waterfall up the gully along the track that runs alongside the gorge. You can find Doolena Gorge about 41 kms north of Marble Bar on the Marble Bar-Port Hedland Road. The access road is on your left just after you cross the Coongan River. Please note - the road is only suitable for 4WD vehicles.



18. **WALK A LIVING HISTORY
HERITAGE TRAIL.**

Take a stroll around the living history of Marble Bar following its Heritage Trail Map. You can pick on up the visitor centre and businesses around the town. It gives a fascinating story and insight into early life of this remote outback post whilst walking around the town’s historical buildings and locations.

19. **FOLLOW THE NEWMAN
WATERHOLE CIRCUIT.**

If you love a great swimming hole and camping spot, then the Newman Waterhole Circuit will tick all the boxes. The easiest place to get to is Gingianna Pool as it’s close to Newman. Kalgans Pool is close to town too. On the way to Eagle Rock Falls is Three Pools. It has some permanent deep pools in a steep sided gorge but avoid it if you’re towing a trailer or van, as there’s no turning circle. Eagle Rock Falls along with Kalgans Pool are the more popular spots on the Circuit. The falls are 12 and 60 metres high during the wet season. They also offer spectacular views of the cliffs and Coondiner Gorge. Also on the circuit is Weeli Wolli Creek. It’s a series of permanent pools and small waterfalls and is a garden of eden for fish and bird life.

20. **FOSSICK THE TINY TOWN
OF GOLD AND DIAMONDS.**

Nullagine, another gold rush town, was established in 1888. This tiny township north of Newman, is also the site of Australia’s first known diamond find so gem lovers, get your shovels out! Today, visitors love seeking out its red granite hills, winter wildflowers and plentiful waterholes; including Beaton’s Creek Gorge, Garden and Daylight Pools, along with the ancient rocks of Conglomerate Gorge. The area also is a fossickers haven hoping to strike it lucky. Grab a cold beer, great pizza or pub meal at the historic Nullagine Hotel. They even have a Friday night pool comp!

21. **HAVE A COLDIE AT AN
OUTBACK PUB ICON.**

The Ironclad is one of the Pilbara’s iconic outback pubs. It was erected as Marble Bar’s first hotel in 1892. Like many buildings in early Australia, it’s one of the first two permanent buildings in the town at the time of the gold rush. Today, it’s a great spot to call in for a cold drink and classic Aussie counter meal. It also has small number of accommodation types available.



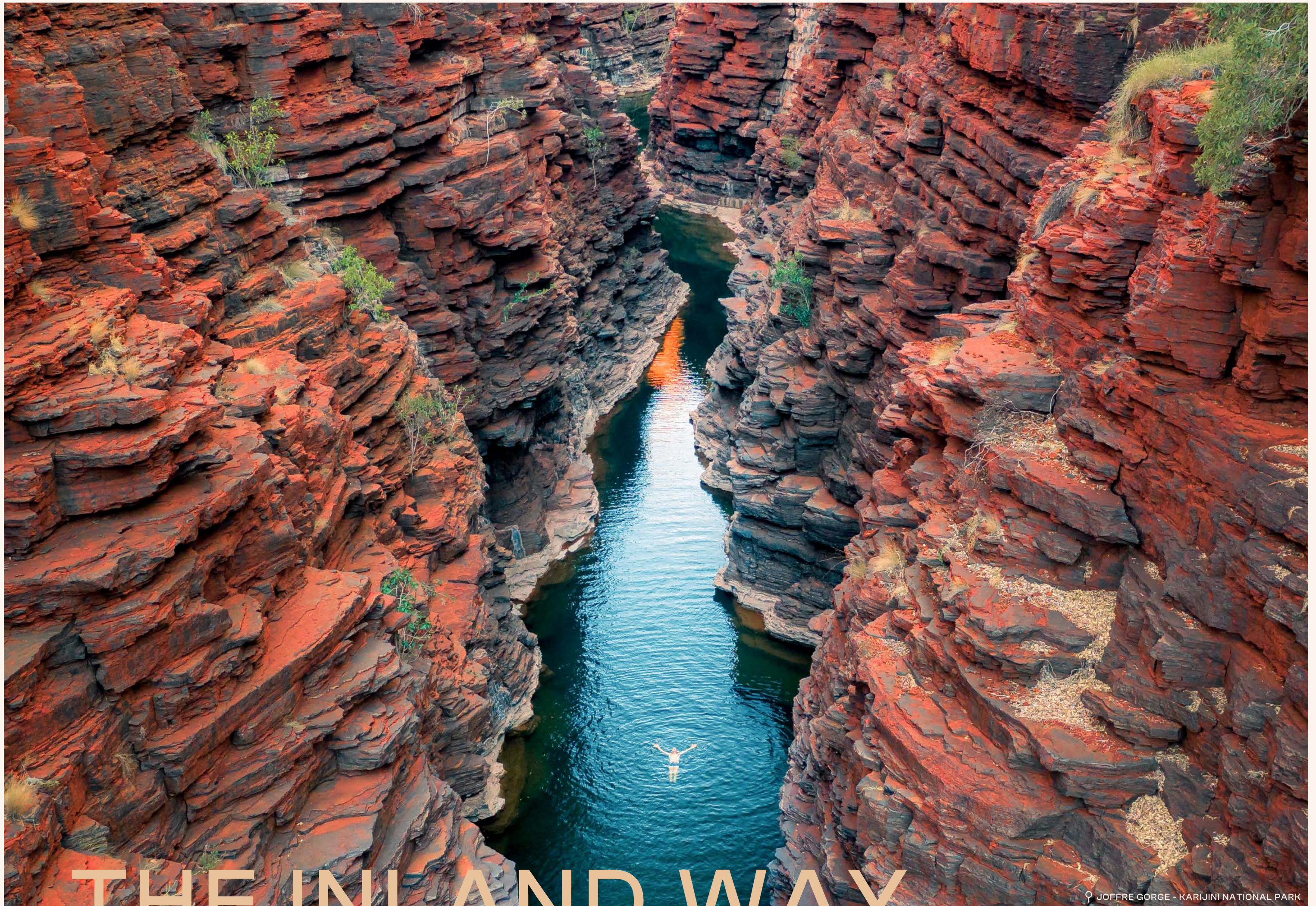
♀ KALGANS POOL



♀ KARLAMILIYI (RUDALL RIVER)



♀ MT NEWMAN - DARREN FIELDS



THE INLAND WAY.

♀ JOFFRE GORGE - KARIJINI NATIONAL PARK



THE INLAND WAY.

Plunging gorges and soaring mountain peaks carved from the landscape over millennia, punctuated by idyllic swimming holes and waterfalls, The Warlu Way Inland includes the jewel in the Pilbara's crown, Karijini National Park. You'll also experience Tom Price, Paraburdoo and many more stunning locations.

THE WARLU INLAND WAY COVERS THE BREATHTAKING KARIJINI NATIONAL PARK, MILLSTREAM CHICHESTER NATIONAL PARK, THE TOWNS OF TOM PRICE AND PARABURDOO.



23

INLAND WAY THINGS YOU MUST DO.

1. EXPLORE THE WONDERS OF KARIJINI.

Karijini National Park is one of the key 'must do' highlights of the Pilbara and Western Australia. Ghost white gum trees, termite mounds and expansive rich red plains, give way to its natural beauty of red cliff sandwiches that layer up the spectacular gorges which have been eroded by nature over billions of years. Karijini's stunning gorges, mountains, ancient rocky tunnels and crystal-clear oasis waterways and waterfalls will give you moments of awe and memories that last a lifetime. Explore its many trails, then cool off under waterfalls and fern-edged, crystal-clear, tree-lined waterholes.

2. TIME TRAVEL INTO AN ANCIENT WILDERNESS.

Karijini's deep gorges and high peaks are truly an ancient landscape, with some of the oldest rock formations exposed on the Australian continent. The evolution of its landscapes we see today, started over 2500 million years ago, when fine, iron-rich sediments accumulated on an ancient seafloor. Over millions of years, further sediments were overlaid, creating immense pressure on the underlying layers, transforming them into solidified layers of rock. Horizontal compression caused the rock to buckle and crack, before rising up out of the water to form dry land. A drop in sea level caused creeks and rivers to cut down through these rocks, creating the deep gorges we see today. The types of rock that can be seen especially well in the gorges, are the banded iron formations, dolomite (similar to limestone with a grey or pale brown colour) and Mount McRae shale (very soft purple or pink rock). Who knew rocks really could rock your world?



3.
HIKE TO AND SWIM
AT DALES GORGE.

Dales Gorges is the perfect Karijini National Park ‘three for one’ highlights package. Here, you can experience the beautiful Fern Pool with its small twin waterfalls, Fortescue Falls and lookout, as well as Circular Pool and lookout. These are some of the prettiest gorge settings you can take a swim in Western Australia. Each location is accessible via different trails options of either walking via directly to them or on a trail loop to see all three. Please note – there are various trail challenges of walking on ledges, stepping-stones and ladders.

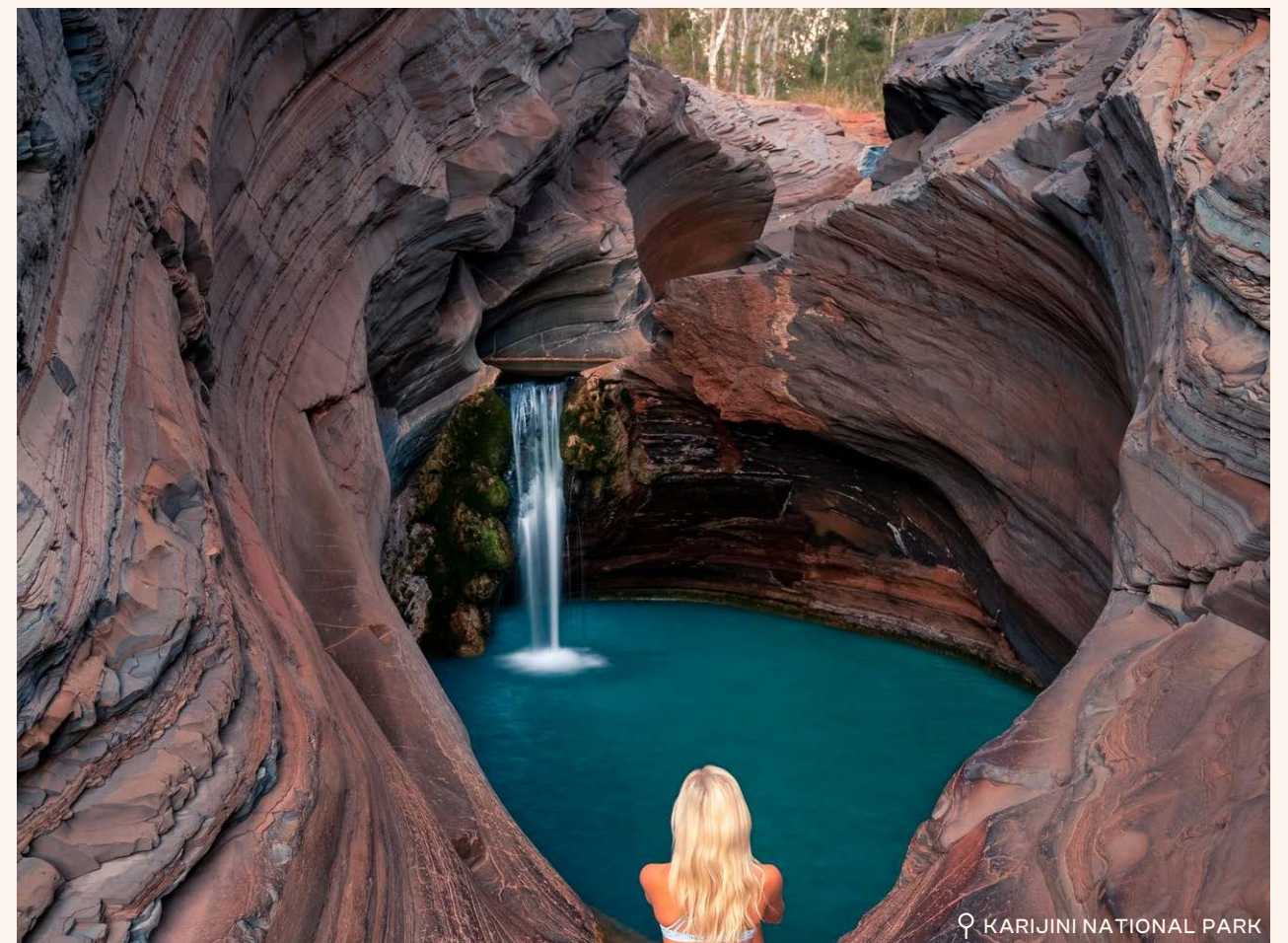


4. SEE THE RARELY SEEN
SIDE OF KARIJINI.

Delve deeper with a guided tour of Karijini – whether that's a half or one-day tour departing from Tom Price; a visit as part of an extended West Coast or Pilbara itinerary departing Perth, Exmouth or Broome, or a private charter designed just for you. At the park, you'll have the opportunity to join a stargazing at Dales Gorge, or join a specialist canyoning tour on selected dates during the year.

5. EXPLORE THE REMOTE
HAMERSLEY GORGE.

Hamersley Gorge is the most remote of the Karijini gorges. You can find it in the north west corner of the National Park. It's well worth the effort of discovery, as it offers a tremendous view of folded bands of coloured ancient rocks. Plus there are stepped waterfalls at the base of the gorge. Hamersley Gorge is wider than other gorges in the park, and offers more expansive views on the descent into the gorge itself. It really shows off the incredible layers of rock that were bent and buckled before they pushed their way back to the surface millions of years ago. At the base of the gorge, there's a fab gorge water-pool perfect for a dip and a place to chill under the shady trees.





LEGENDARY GORGES



6. ADVENTURE DEEP INTO THE STUNNING HANCOCK GORGE.

Hancock Gorge is simply stunning for the for the fit and adventurous to do. The adventure begins climbing down a ladder, then walking deep into the gorge, through a series of narrow chambers and past beautiful rockpools. Although the trail is short, it's the most exciting trail in the park. It threads its way through the gorge to a narrow canyon opening onto a natural amphitheatre and onwards through the infamous Spider Walk to the green waters of Kermits Pool. Hancock Gorge is accessed via a Class 2 trail from the Weano Recreation carpark, with a side trail linking this part of the Hancock Gorge trail to the Oxer and Junction Pool lookouts walking trail. Please note - caution should be taken when entering Hancock Gorge.

7. HIKE INTO A BEAUTIFUL AMPHITHEATRE.

Joffre Gorge is where you'll find a stunning natural amphitheatre with a spectacular curved seasonal waterfall. The trail into the gorge includes some more challenging sections for those who wish to reach the pool downstream from the waterfall. Walkers will need to scramble their way down some rock slabs to the waterfall. The Joffre Falls walk trail is approximately 1.5 kilometres return. You'll also get some wonderful views across the gorge from a lookout platform.

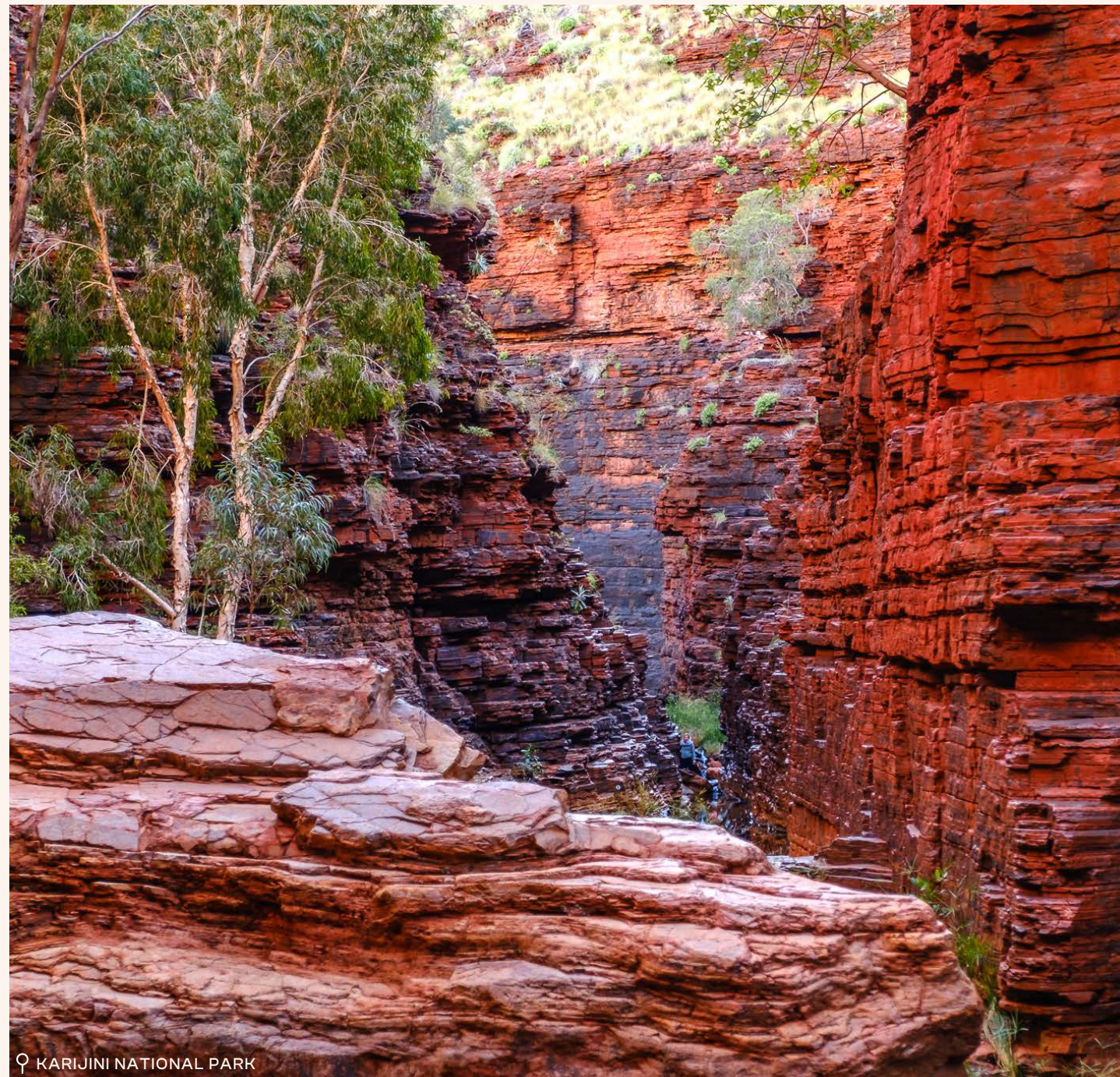


♀ KARIJINI NATIONAL PARK



8.
MAKE YOUR WAY TO THE
ROCK ARCH POOL.

Located part-way between the Weano Gorge and the Karijini Visitor Centre, Kalamina Gorge is the shallowest of the gorges in the park, and offers a good introduction to the gorges' system. After an initial descent down a set of roughly hewn steps, the track at the base of the gorge brings you to a seasonal waterfall trickling over rock ledges into a small permanent pool. To explore the gorge further, it's a fairly easy walk through the gorge itself, following the stream past rock pools and banded rock walls to Rock Arch Pool.



KARIJINI NATIONAL PARK

9.
GET A KNOCKOUT KARIJINI
VIEW FROM KNOX LOOKOUT.

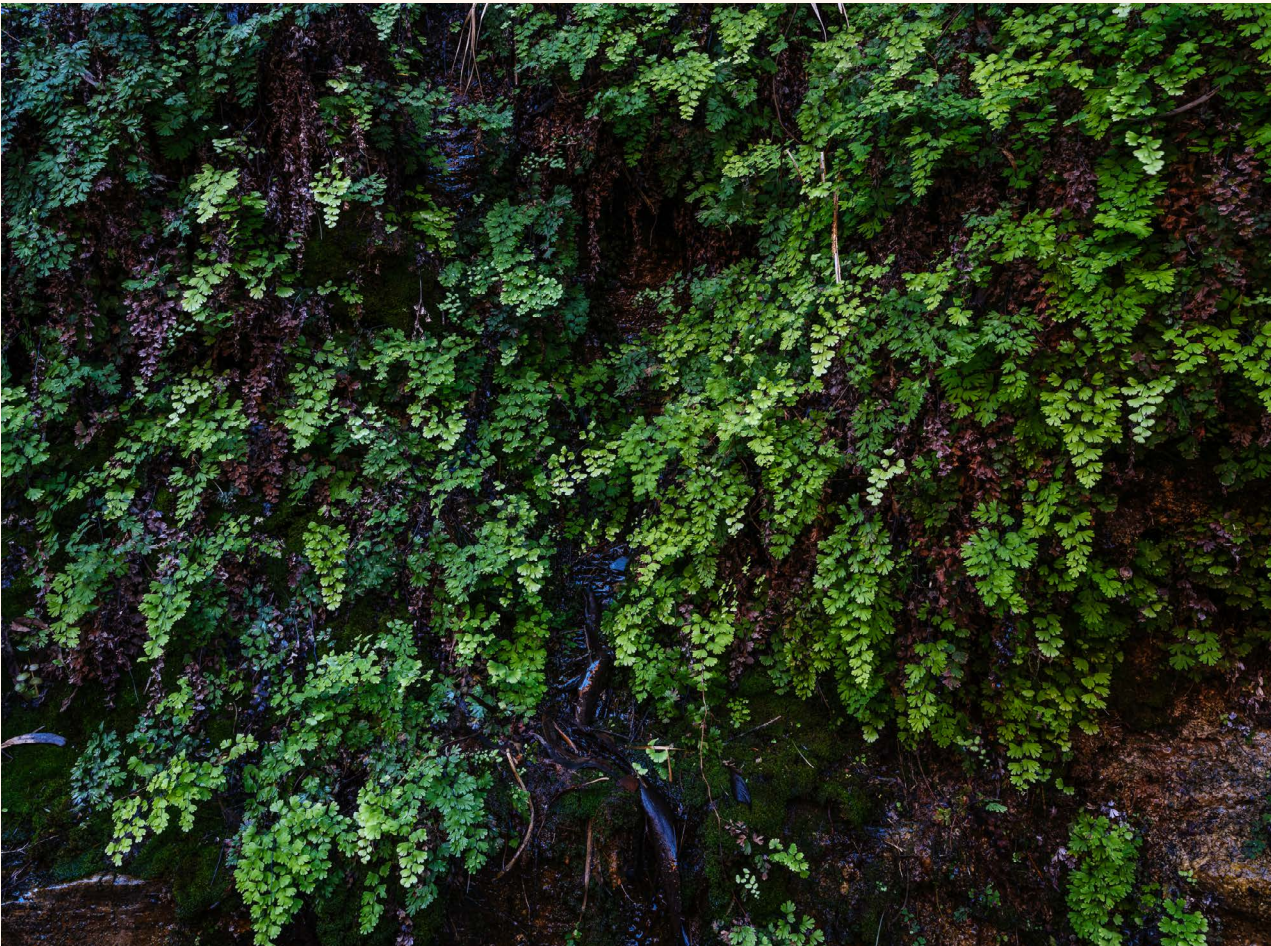
The Knox Lookout has spectacular views across Knox Gorge where it connects with Wittenoom Gorge. It's so worth a visit in the early morning or late afternoon, when sunlight enhances the beautiful colours of the steep rock faces. From the lookout, a path takes you to the start of the Knox Gorge trail. This takes you down into the gorge to where the gorge narrows to a slot canyon. This trail is two kilometres return and requires some scrambling over rocks and a small amount of ledge walking so please be careful.



KARIJINI NATIONAL PARK

10. FALL IN LOVE WITH AN ANCIENT GARDEN OF EDEN.

The Karijini National Park isn't just about stunning gorges. It's also home to a diversely beautiful grasslands, forests and pockets of seasonal wildflowers. Fun fact - flora in the park includes over 500 species of native flora, including some rare species. From June to September each year, the Pilbara's wildflowers burst into bloom, including the purple mulla mullas and Karijini wattle. You might have surprise meetings with a wide range of native wildlife. There are over 125 species of birds in the park that mostly live near the pools and streams. Keep an eye out for the spinifex pigeon with its tall head crest. You may also see red kangaroos, euros (kangaroos that are common to the rocky country), Rothschild's rock wallabies, echidnas, dingoes, as well as such as the endangered northern quoll and Pilbara ningau. Reptiles and amphibians such as frogs, geckoes, goannas, dragons, legless lizards, pythons and other snakes can also be found within the park. Another fun fact - the Bungarra (sand goanna) can grow up to 1.6m and you might see one foraging and smelling the air with its forked tongue.





11.
MEET THE HIGH AND
MIGHTY MOUNT BRUCE.

Mt Bruce, or Punurrunha, is Western Australia's second highest mountain and boasts one of the country's most scenic walks. There are three walks differing lengths and classifications, offering something for most visitors. For a view over the nearby Marandoo mine, there's a 500 metre walk from the Mt Bruce carpark to Marandoo View which is an easy option. The Honey Hakea trail continues on from the Marandoo View for another 1.8 kilometres to a vantage point with views over the mountain ranges and towards the Marandoo mine. For those wanting even higher views, the Mt Bruce Summit trail takes you a further 2.2 kilometres to the top. Although more challenging, the extra effort offers spectacular views across the Hamersley Ranges.



12. TAKE IN ONE OF WA'S MOST
STUNNING PANORAMAS.

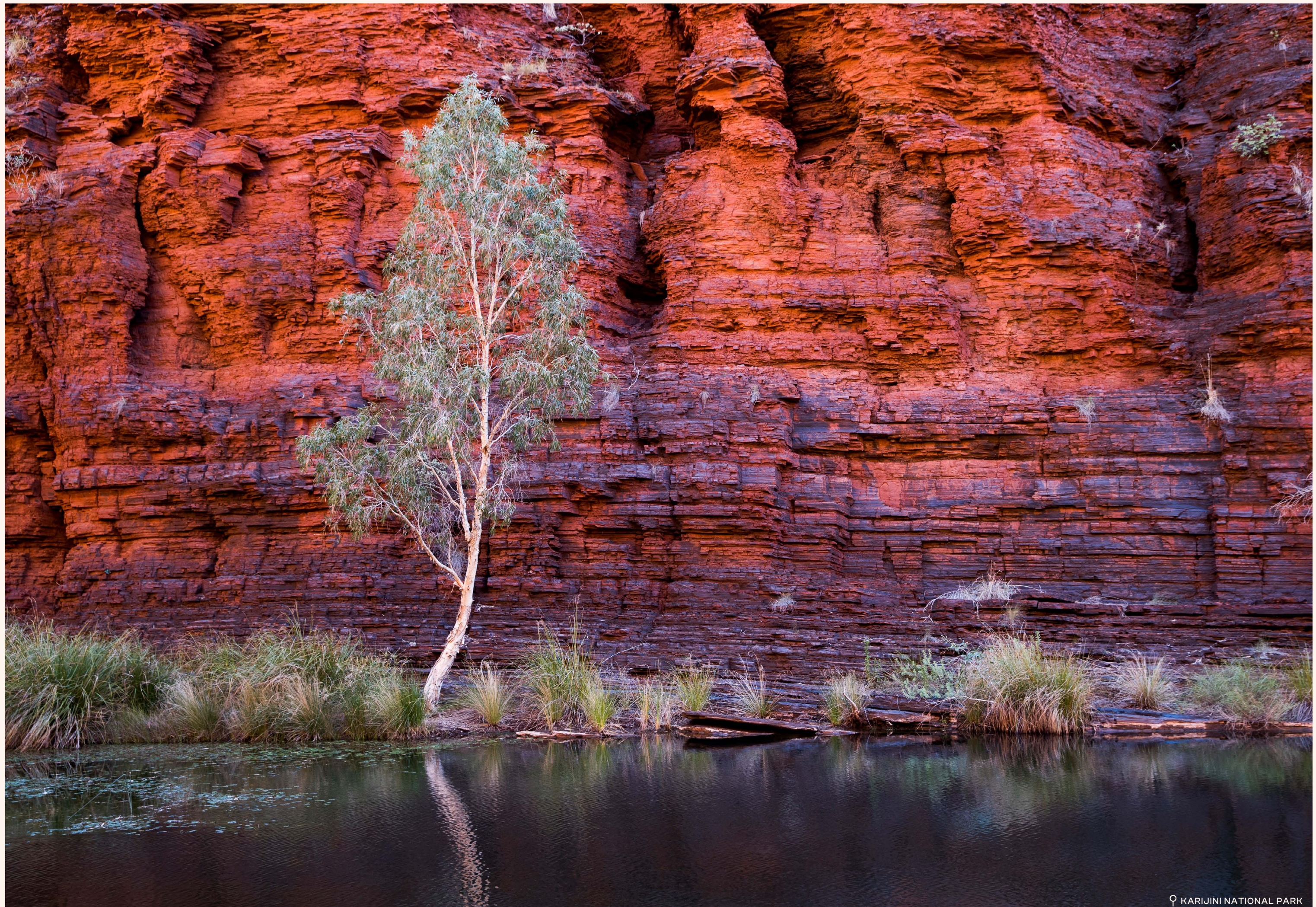
Located at the junction of four mighty gorges, Oxer Lookout offers one of the most stunning panoramas in Western Australia. Standing here, you'll experience the sheer enormity and grandeur of the Joffre, Weano, Hancock and Red Gorges. At the Junction Pool Lookout, Weano Gorge, Hancock Gorge and Red Gorge all meet and are at their most spectacular in the mornings and evenings, when the sunlight deepens the red colour of their rock faces. Take your camera and keep your phone charged as you need to capture the moment in its full beauty.

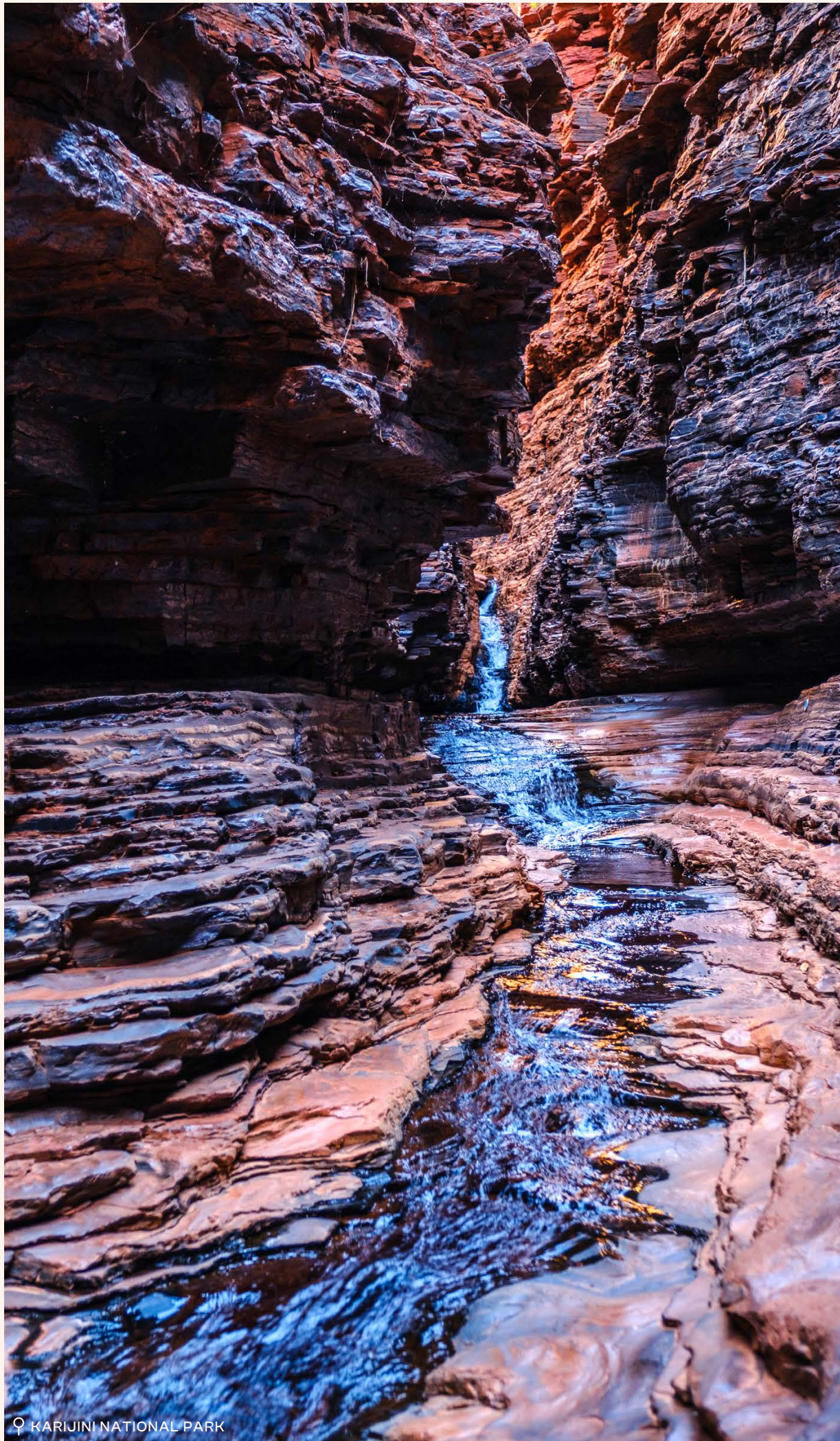
13. WALK INTO WEANO GORGE
TO THE HANDRAIL POOL.

A short walk into Weano Gorge offers the best introduction to Karijini National Park's ancient landscapes. Walkers can choose to enter Weano Gorge in two places. The first is a longer walk through Upper Weano Gorge starting at the carpark, and second is a shorter walk through Lower Weano Gorge starting from the trail towards Oxer and Junction Pool lookouts. The Weano Gorge trails require some scrambling and wading through water. The last part of the trail to Handrail Pool is more challenging as hikers will need to walk over stepping stones and use the handrail to help negotiate the climb into the spectacular Handrail Pool. You can also join a Karijini tour to explore the challenging trail beyond.







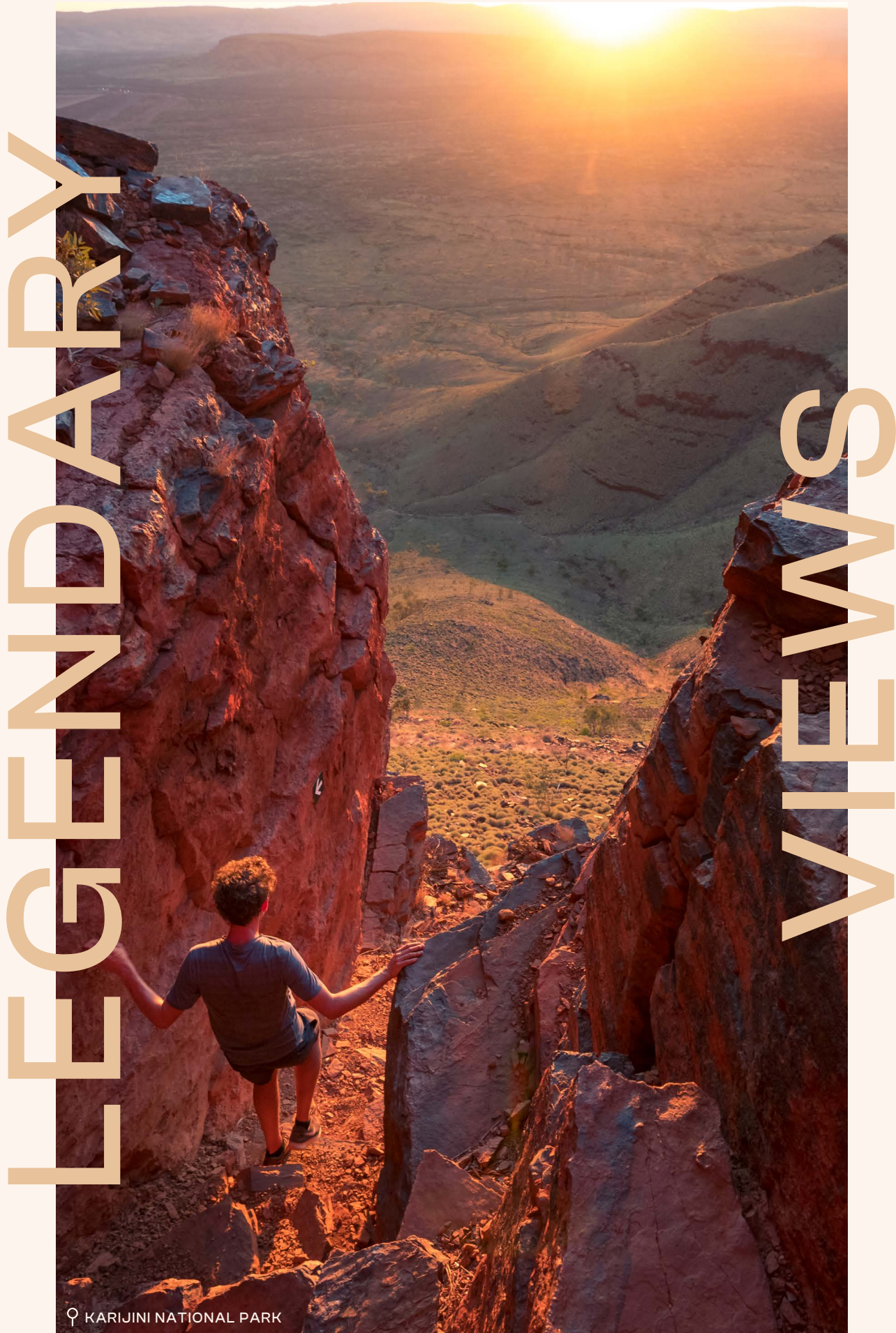


14. DRIVE UP TO WA'S HIGHEST TOWN.

At 747 metres, Tom Price is the highest town in Western Australia! Named after Thomas Moore Price, the vice-president of the giant United States steel company Kaiser Steel, Price was one of the main supporters of the Pilbara region in the early 1960s. The most prominent feature of Tom Price is the peak known as Mt Nameless (1,128 metres) or Jurn-damurneh to the local Aboriginal people, meaning 'wallabies live near here'. Its summit is accessed along a four-wheel drive track, and it's also possible to hike to the summit for amazing views of the local landscapes. Take an organised tour of the massive Rio Tinto Iron Ore Mine on tour. Or pack a picnic and head out to natural bush setting of Kings Lake which has barbeques and gazebos. The town offers a caravan park and hotel/motel as accommodation options.

15. HIKE WA'S SECOND HIGHEST ACCESSIBLE MOUNTAIN.

Mount Nameless, known as Jarndunmunha to local Aboriginal people, is located in Tom Price. Its peak stands 1128 metres above sea level and is the second highest accessible mountain by four-wheel drive in Western Australia - which offers all of the rewards of a spectacular mountain view without the hike! Or if you're keen to stretch your legs and work on those glutes, you can hike to the summit. A walking trail starts from the base of Mount Nameless at back of the Tom Price Speedway track, just allow three hours for the return hike. From the lookout you'll have sweeping views across the Hammersley Ranges, the town of Tom Price and the iron ore mining operations.



LEGENDARY

SWEEPING VIEWS

♀ KARIJINI NATIONAL PARK

16.
SNUGGLE INTO SOME
NATURE-BASED CAMPING.

Millstream Chichester National Park, near the town of Roebourne, offers some of the best nature-based camping in the Pilbara. Sip your morning coffee to a wide-open vista of rolling hills, escarpments, tree-lined rivers and water pools at Millstream Chichester National Park. the park covers an area of approximately 200,000 hectares around the Fortescue River – the heartland of the Yindjibarndi people. Millstream is a lush oasis of deep gorges and palm-fringed rock pools, which provide a stark contrast to the surrounding rocky red escarpments and rolling yellowy-sage spinifex covered hills. Fun fact - water run-off from the Hamersley Ranges flows via the Fortescue River into an underground aquifer that's believed to contain in excess of 1,700 million cubic metres of water and cover an area of almost 2,000 square kilometres. There are a range of walking and bike trails within the park along with other attractions.



♀ MILLSTREAM CHICHESTER NATIONAL PARK

17.
HIKE AND SWIM IN OASIS POOLS IN
MILLSTREAM CHICHESTER NATIONAL PARK.

Don't let the name put you off, but Python Pool is a stunning rock pool swim spot. Not only refreshing, it also has a spectacular backdrop of the imposing rugged ochre cliffs. Python Pool is easily accessible by road, via the Roebourne-Wittenoom Road within the park, and a walking trail. If you like a good hike, take The Camel Trail. It starts at Python Pool and is an eight kilometres, three hour (one way) moderate walk. The trail winds its way up through rolling Spinifex covered hills and large termite mounds to the sandstone escarpment of the Chichester Range. Another fabulous swim spot is Deep Reach Pool. Just a 200m walk from the Deep Reach Pool carpark brings you to a large pool, home of Barrimurdi, the Warlu or Serpent. The Yinibardni people ask that you respect the site and keep noise to a minimum. Fishing, swimming and canoeing is permitted, however motorised watercraft is not permitted.



♀ MILLSTREAM CHICHESTER NATIONAL PARK

18. SEE HOW EARLY SETTLERS LIVED AT MILLSTREAM STATION.

Attracted by the bounty of water under Millstream Chichester National Park, early European settlers established a pastoral station where the park now sits. The cattle station remained in operation for over 100 years and is now the Millstream Homestead Visitor Centre. It's where you can get all the information about the park's attractions, as well as learning about the life of the Yinjibardni people and early pastoral settlers. You can explore station life in Millstream in the 1930s, by following the insightful 750m Homestead Trail.

19. TAKE THE SNAPPY GUM DRIVE FOR PANORAMIC LOOKOUT VIEWS.

Snappy Gum Drive is a 20km scenic loop road. It links the Millstream Homestead Visitor Centre with Pannawonica Road. Stop at the many scenic lookouts which provide beautiful views across the Fortescue River Valley. Undulating hills and several important indigenous areas can be seen from the road. Its easily accessed by 4WD vehicles year-round and by 2WD (low clearance) vehicles when indicated on signs found at either entrance point. Another great lookout, although not on the same scenic drive, is at Mount Herbert. It forms part of the Chichester Range. Park your car at the base of the mountain, and take the challenging 45 minute return climb. Mount Herbert's peak offers spectacular panoramic views of the surrounding countryside.



♀ MILLSTREAM CHICHESTER NATIONAL PARK

20. LEARN THE SIGNIFICANCE OF LOCAL ABORIGINAL SITES.

The Yindjibarndi people are the traditional landowners of WA's Millstream Chichester National Park. The Juluwarlu Aboriginal Corporation has produced a guide book called "Ngurra Wardurala Buluyagayi: Exploring Yindjibarndi Country". In consultation with the elders, the Corporation has compiled accurate site descriptions, including songs and stories that are linked to the land, in English and Yindjibarndi. The guide book also includes a fold-out (A3) map of Millstream Chichester National Park, making it an essential guide for any visitor who seeks a deeper understanding of Yindjibarndi country. Pick your copy up from the Millstream Homestead Visitor Centre, and also find out the best camping spots while you're there.



♀ MILLSTREAM CHICHESTER NATIONAL PARK



♀ MILLSTREAM CHICHESTER NATIONAL PARK



♀ MILLSTREAM CHICHESTER NATIONAL PARK



♀ MILLSTREAM CHICHESTER NATIONAL PARK



♀ MILLSTREAM CHICHESTER NATIONAL PARK



♀ MILLSTREAM CHICHESTER NATIONAL PARK



♀ MILLSTREAM CHICHESTER NATIONAL PARK



♀ MILLSTREAM CHICHESTER NATIONAL PARK

21. **CALL INTO 'MEAT FEATHERS'
AND MAYBE SEE A UFO.**

Paraburdoo is a small mining town. It takes its name from the Indigenous word Pirupardu, meaning 'Meat Feathers', because of the large resident population of white corellas. Paraburdoo is the closest airport to Karijini National Park. Car hire is available at the airport and also has stores in town to stock up on supplies. Established in the 1960's as a mining town, Paraburdoo is renowned for its beautiful scenery, wildlife diversity and interesting short history - which includes UFO sightings, the discovery of 200-year-old bones and even royal visits. It also offers exceptional bird watching at Palm Springs. Keep an eye out for the Terex Haul Truck, or the "Jolly Green Giant" on Camp Road. This was one of the trucks used to haul iron ore at the Paraburdoo mine in the 1970s and 80s. Drive up to Radio Hill Lookout for panoramic views over the town. Then drive on to Kelly's Pool which is a popular spot for picnics alongside the water, however swimming is not permitted.

22. **STOP AND ADMIRE ICONIC
PILBARA SCULPTURE.**

Located three kilometres just outside Paraburdoo on the road to Tom Price, is a beautiful and imposing sculpture was created by WA sculptor Alex Micke in collaboration with the local community. It's made from steel plate, shaped during a series of controlled blasts and from Banded Iron and Formation stone, which was excavated on the mine site locally. It weighs almost nine tonnes. Be sure to stop and admire it. At sunsets it offers a beautiful insta photo opportunity.





23. JUST SAYING THE NAME “PANNAWONICA” MAKES YOU WANNA VISIT IT.

Pannawonica takes its name from nearby Pannawonica Hill, or the “hill that came from the sea”. The traditional story is that Pannawonica Hill was once an island over which two local groups were in dispute, until a sea spirit decided to resolve the dispute by moving the hill inland. As the hill was dragged over the land it left a deep indentation which became the Robe River. The area around Pannawonica area is part of a 2500 million year old formation containing the Hamersley Group of rocks, formed by chemical sedimentation of minerals in an ocean environment. Pannawonica is a ‘closed town’, (built in 1970 to house the employees of Robe River Iron) but visitors are welcome to visit to for supplies and to refuel. On your way to Pannawonica, keep an eye out for the “Boot Tree” – it’s something of a tradition that when people leave Pannawonica permanently, they leave their boots behind, hanging from the branches of this tree. Along the Robe River, there are some great shaded swimming holes with picnic areas. And every September the town has its annual Pannawonica Rodeo/Robe River Rodeo. Please note - Pannawonica is also the western gateway to Millstream Chichester National Park, approximately 1.5 hours from Pannawonica along the unsealed Millstream - Yarraloola road. If travelling this road, it’s recommended that you notify the Pannawonica Police or the Millstream Ranger of your intention to travel. The road is not suited to busses, caravans, trailers or two-wheel drive vehicles.



THE RED DOG WAY.

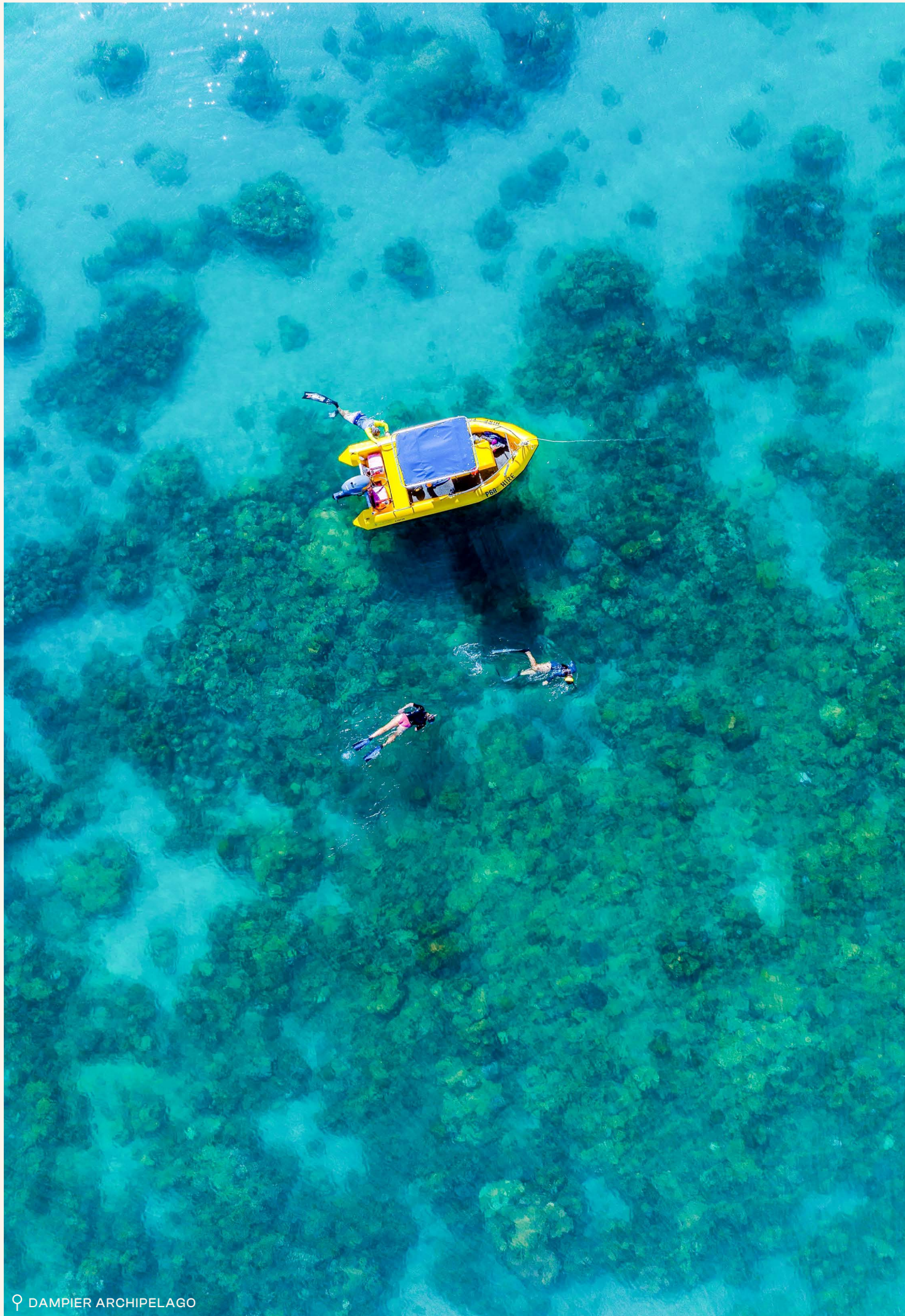
📍 MILLSTREAM CHICHESTER NATIONAL PARK



THE MANUWARRA RED DOG WAY.

Named in honour of both the famed Kelpie cattle dog who frequented the region, and the traditional Aboriginal name for the area, this drive route starts in Dampier, then traverses the heart of the Pilbara, including the magnificent Millstream Chichester National Park and finishes at Tom Price.

THE WARLU RED DOG WAY STARTS IN DAMPIER AND CONTINUES TO THE MILLSTREAM CHICHESTER NATIONAL PARK AND FINISHES AT TOM PRICE.



14

MANUWARRA RED DOG WAY THINGS YOU MUST DO.

1.

**GO SNORKELLING, DIVING
AND FISHING OFFSHORE.**

Head out to the Montebello Islands Marine Park. It covers an eye-watering more than 58,000 hectares of ocean and has over 250 low-lying limestone islands and islets. Its coral reefs, colourful tropical fish, wildlife and maritime heritage are a paradise for fishers, snorkellers and divers. FYI, trips to the islands depart from Dampier and Onslow.
2.

**BE A DAMPIER ARCHIPELAGO
NATURE EXPLORER.**

With 42 islands and islets of the Dampier Archipelago to explore, the chances of you running into another person are minimal, giving you the opportunity to unwind and discover the coast's untamed wilderness. The archipelago is a haven of coral reefs, sponge gardens and more than 650 species of fish. It's also home to green, hawksbill, and flatback turtles that nest on its beaches. Dugongs, whales and dolphins can also been spotted too. Island wildlife includes wader birds and wallabies.
3.

**DO A DAMPIER ARCHIPELAGO
DAY TRIP.**

Take a day trip to enjoy a tour, dive and snorkel or just while away the hours on your boat amongst the islands, of which 25 are nature reserves. Many of the islands are perfect for day trips. While there are no facilities, camping is permitted on some of the islands such as Enderby, Eaglehawk, Dolphin and Gidley Island. Here's an awesome experience – Here's an awesome experience - join a guided jetski or kayak tour of the islands to explore

LEGENDARY SPOTLIGHT



4. SEE DAMPIER'S RED DOG MEMORIAL AND MORE.

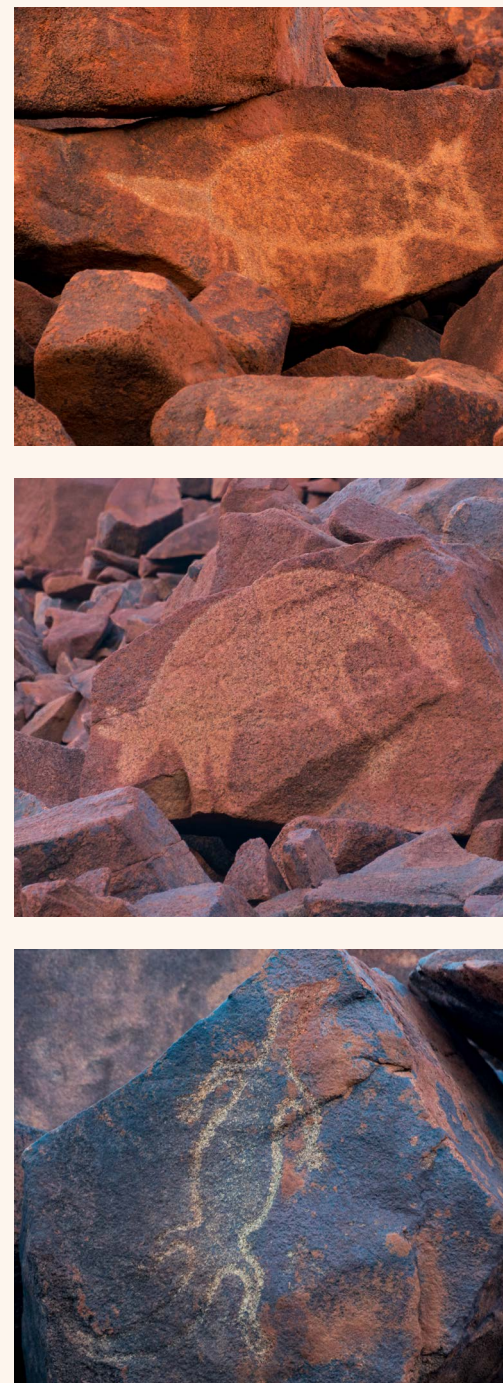
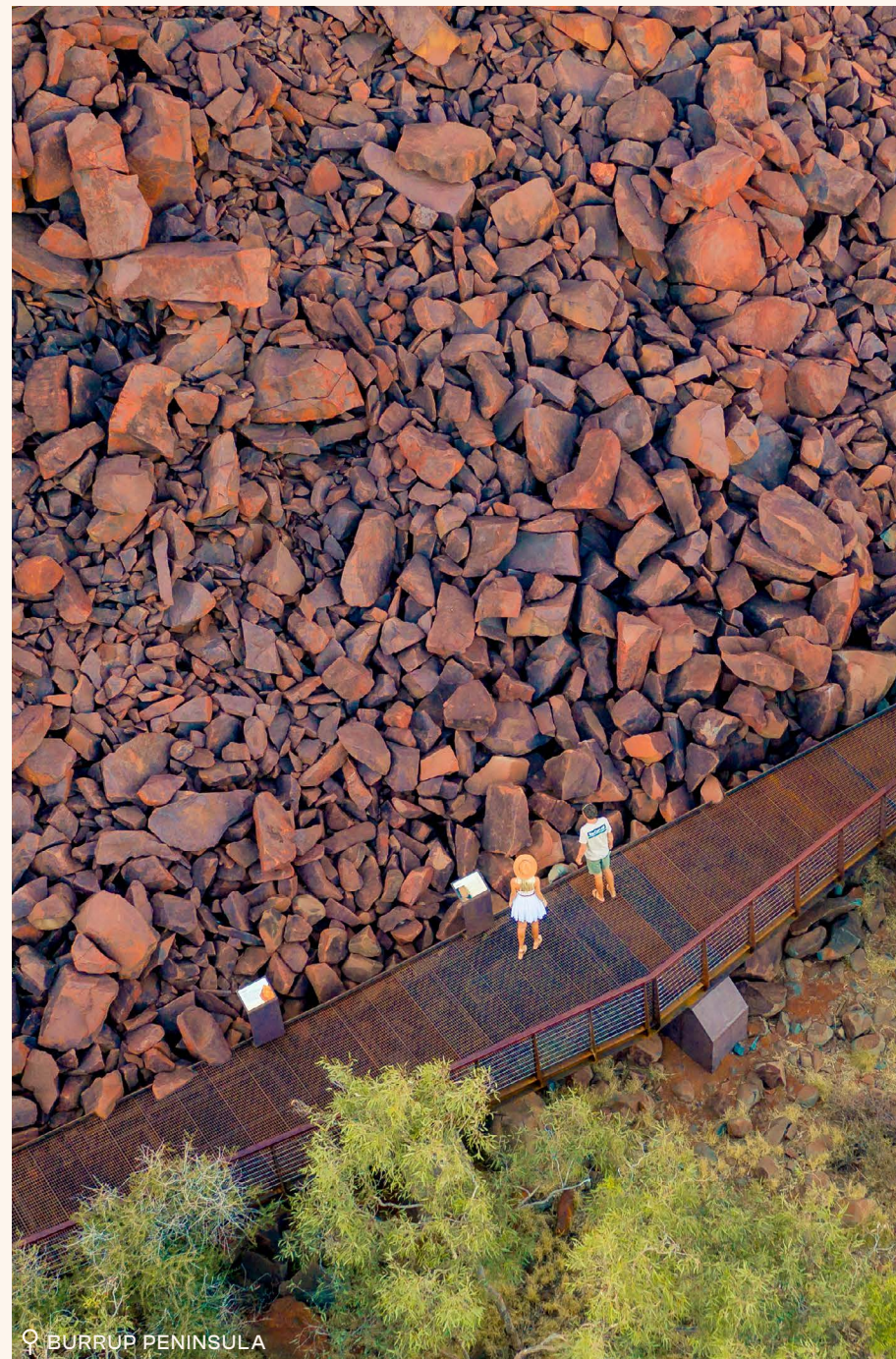
Here's a true Australian icon that you must experience. Dampier is home to the 'Red Dog' memorial. He became a Pilbara legend for his series of owners and travelling on his own throughout the region, making mates along his many journeys. His memorial is on the way into town, and you can follow the Red Dog Trail to discover more about the North West's favourite canine and his remarkable story. Fun fact – Dampier is the largest tonnage shipping port in Australia and houses the massive export facilities of Hamersley Iron, Dampier Salt and the North West Gas Shelf Project. Dampier is also the departure point for day trips to the spectacular Dampier Archipelago. Take a day to explore Murujuga National Park, which is home to fascinating rock art.



DAMPIER

5.
VISIT A WORLD FAMOUS
ANCIENT ROCK ART GALLERY.

The highest concentration of petroglyphs rock engravings of any known site in the world is at The Burrup Peninsula Murujuga National Park. With Aboriginal people living there for more than 50,000 years, the engravings (petroglyphs) have been estimated to be as old as 40,000 years. The petroglyphs are diverse, depicting a record of human figures and birds, to marine life and extinct creatures, the art provides an insight into and ancient world.



6.
HAVE SOME NATURE
MEETUPS.

The Burrup Peninsula is home to 30% of all plants and animals that live in the Pilbara. You'll see the northern quoll, Rothschild's rock-wallaby, echidnas, common rock rat and the pettily named delicate mouse. Shady valleys contain temporary pools, and provide interesting wildlife homes such as for the Pilbara olive python who live amongst the rock piles.



7.
SNUGGLE INTO SOME NATURE
BASED CAMPING.

Millstream Chichester National Park, near the town of Roebourne, offers some of the best nature-based camping in the Pilbara. Sip your morning coffee to a wide-open vista of rolling hills, escarpments, tree-lined rivers and water pools at Millstream Chichester National Park. Covering an area of approximately 200,000 hectares around the Fortescue River – the heartland of the Yindjibarndi people – the park is lush oasis of deep gorges and palm-fringed rock pools, which provide a stark contrast to the surrounding rocky red escarpments and rolling yellowy-sage spinifex-covered hills. Fun fact - water run-off from the Hamersley Ranges flows via the Fortescue River into an underground aquifer that's believed to contain in excess of 1,700 million cubic metres of water and cover an area of almost 2,000 square kilometres. There are a range of walking and bike trails within the park along with other great attractions.



♀ MILLSTREAM CHICHESTER NATIONAL PARK

8. SEE HOW EARLY SETTLERS
LIVED AT MILLSTREAM STATION.

Attracted by the bounty of water under Millstream Chichester National Park, early European settlers established a pastoral station where the park now sits. The cattle station remained in operation for over 100 years and is now the Millstream Homestead Visitor Centre. It's where you can get information about the park's attractions as well as the life of the Yindjibarndi people and the early pastoral settlers. Explore station life in Millstream in the 1930s following the fascinating and insightful 750m Homestead Trail.

9. TAKE THE SNAPPY GUM DRIVE FOR
PANORAMIC LOOKOUT VIEWS.

Snappy Gum Drive is a 20km scenic loop road. It links the Millstream Homestead Visitor Centre with Pannawonica Road. Stop at the many scenic lookouts which provide beautiful views across the Fortescue River Valley. Undulating hills and several important indigenous areas can be seen from the road. Its easily accessed by 4WD vehicles year-round and by 2WD (low clearance) vehicles when indicated on signs found at either entrance point.



♀ MILLSTREAM CHICHESTER NATIONAL PARK



📍 MILLSTREAM CHICHESTER NATIONAL PARK



📍 MILLSTREAM CHICHESTER NATIONAL PARK



📍 MILLSTREAM CHICHESTER NATIONAL PARK

10.
HIKE AND SWIM IN OASIS POOLS IN
MILLSTREAM CHICHESTER NATIONAL PARK.

Don't let the name put you off but Python Pool is a stunning rock pool swim spot. Not only refreshing it also has a spectacular backdrop of the imposing rugged ochre cliffs. Python Pool is easily accessible by road, via the Roebourne-Wittenoom Road within the park, and a walking trail. If you like a good hike, take The Camel Trail. It starts at Python Pool and is an eight kilometres, three hour (one way) moderate walk. The trail winds its way up through rolling Spinifex covered hills and large termite mounds to the sandstone escarpment of the Chichester Range. Another fabulous swim spot is Deep Reach Pool. Just a 200m walk from the Deep Reach Pool carpark brings you to a large pool, home of Barrimurdi, the Warlu or Serpent. The Yinibardni people ask that you respect the site and keep noise to a minimum. Fishing, swimming and canoeing is permitted, however motorised watercraft is not.



♀ MILLSTREAM CHICHESTER NATIONAL PARK





♀ MILLSTREAM CHICHESTER NATIONAL PARK



♀ MILLSTREAM CHICHESTER NATIONAL PARK



♀ MILLSTREAM CHICHESTER NATIONAL PARK



♀ MILLSTREAM CHICHESTER NATIONAL PARK

11. HEAD UP TO MOUNT HERBERT FOR
EVEN MORE PANORAMIC VIEWS.

Another fabulous lookout is at Mount Herbert. It forms part of the Chichester Range and is in the picturesque Millstream Chichester National Park. Park your car at the base of the mountain and take the challenging 45 minute return climb. Mount Herbert's peak offers spectacular panoramic views of the surrounding countryside.

12. LEARN THE SIGNIFICANCE OF
LOCAL ABORIGINAL SITES.

The Yindjibarndi people are the traditional landowners of WA's Millstream Chichester National Park. The Juluwarlu Aboriginal Corporation has produced "Ngurra Wardurala Buluyagayi: Exploring Yindjibarndi Country". In consultation with the elders, the Corporation has compiled accurate site descriptions, including songs and stories that are linked to the land, in English and Yindjibarndi. The book also includes a fold-out (A3) map of Millstream Chichester National Park making this an essential guide for any visitor who seeks a deeper understanding of Yindjibarndi country. Pick up your copy up from the Millstream Homestead Visitor Centre and also find out the best camping spots too.





♀ MOUNT NAMELESS - TOM PRICE

13. DRIVE UP TO WESTERN AUSTRALIA'S HIGHEST TOWN.

At 747 metres, Tom Price is the highest town in Western Australia! Named after Thomas Moore Price, the vice-president of the giant United States steel company Kaiser Steel, Price was one of the main supporters of the Pilbara region in the early 1960s. The most prominent feature of Tom Price is the peak known as Mt Nameless (1,128 metres) or Jurndamurneh to the local Aboriginal people, meaning 'wallabies live near here'. Its summit is accessed along a four-wheel drive track, and it is also possible to hike to the summit for amazing views of the local landscapes. Take an organised tour of the massive Rio Tinto Iron Ore Mine on tour. Or pack a picnic and head out to natural bush setting of Kings Lake which has barbeques and gazebos. The town offers a caravan park and hotel/ motel as accommodation options.

14. HIKE WESTERN AUSTRALIA'S SECOND HIGHEST ACCESSIBLE MOUNTAIN.

Mount Nameless, known as Jarndunmunha to local Aboriginal people, is located in Tom Price. Its peak stands 1128 metres above sea level and is the second highest accessible mountain by four-wheel drive in Western Australia - which offers all of the rewards of a spectacular mountain view without the hike! Or if you're keen to stretch your legs and work on those glutes, you can hike to the summit. A walking trail starts from the base of Mount Nameless at back of the Tom Price Speedway track, just allow three hours for the return hike. From the lookout you'll have sweeping views across the Hammersley Ranges, the town of Tom Price and the iron ore mining operations.



HELPFUL TIPS.

DOWNLOAD THE FREE WARLU WAY TRAVEL APP.

Now that you have all inspiration for your Warlu Way holiday, we can't wait to see you.

One more thing. Visit the Google Play Store or the App Store to download your copy of the FREE Warlu Way Travel app.

It really enhances your holiday experience here. Our App offers you interpretive signage along the drive, along with information and directions to reveal the secrets of the ancient Pilbara region, its historical, cultural and natural wonders.

The App also helps you in planning and navigating your journey, locating services, attractions, and tours. You'll learn all about the regions you're in and how to travel safely through the regions.

Download your free app now.



NASA SAYS IT'S JUST LIKE MARS...
WE SAY, YEAH BUT WITH A TRAVEL APP.



LET'S BE FRIENDS. JOIN OUR MAILING LIST

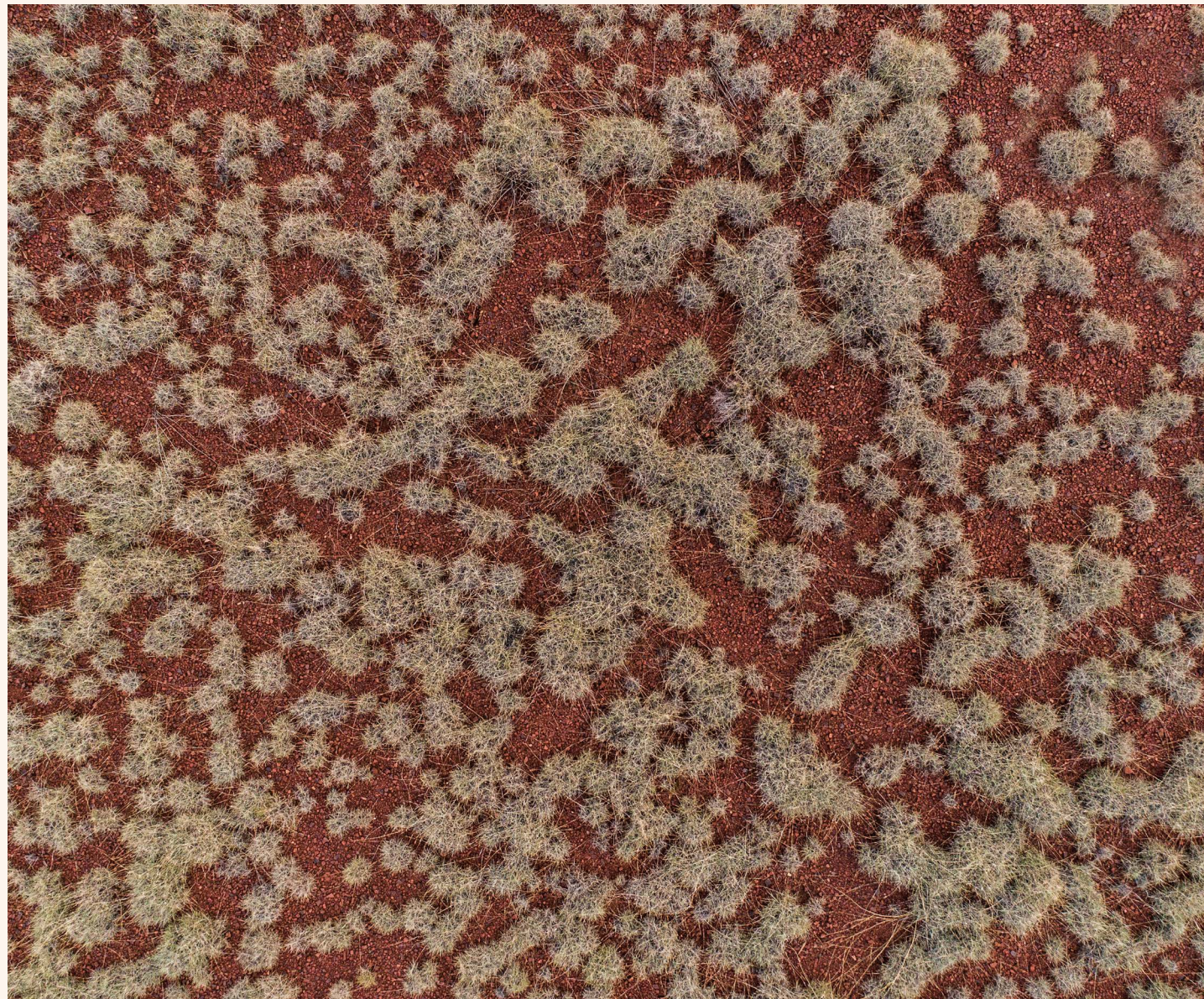
Receive Pilbara holiday ideas, events and great offers delivered straight to your inbox.

Sign-up today -> [Click Here](#)

FOLLOW US FOR MORE HOLIDAY INSPIRATION.

For more stunning inspiration of holidaying in the Pilbara follow us at Australia's North West. Simply click the links below.

*-> [Facebook](#) -> [Instagram](#) -> [YouTube](#)
-> [Pinterest](#) -> [Twitter](#) -> [TikTok](#)*



FYI - HANDY CONTACT DETAILS IN THE PILBARA.

We're a super friendly bunch in the Pilbara and are always happy to help with sharing a local insight of where to go and what to see - just ask at any of our great hospitality spots, fuel stations, cafes and stores.

We also have a collection of Visitor Information Centres. Feel free to get in touch to help plan your Warlu Way Pilbara holiday.

The Warlu Way can be extremely remote in most locations so mobile phone coverage will be limited.

If you're planning to tackle some of the more remote and challenging sections of any of the routes, please check with the police or rangers if the roads are open and their conditions. Also, always carry plenty of water, even during the cooler months.

KARRATHA TOURISM & VISITOR CENTRE
De Witt Road,
08 9186 8055
<https://www.karrathaiscalling.com.au/>

NEWMAN VISITORS CENTRE
Corner of Fortescue Avenue and Newman Drive,
08 9175 2888
<https://www.newman.org.au/>

PORT HEDLAND VISITOR CENTRE
13 Wedge Street
08 9173 1711
<https://www.visitporthedland.com.au/>

AUSTRALIA'S NORTH WEST WEBSITE
For tours, itineraries and local information.
www.australiasnorthwest.com

TOM PRICE VISITOR CENTRE
Central Road
08 9188 5488
<https://www.visitashburton.au/>

MARBLE BAR VISITORS CENTRE
190 McLeod Close
<http://www.marblebar.org/>

ONSLow VISITOR CENTRE
52 Second Ave, Onslow
08 9184 6644
<https://www.visitashburton.au/>



LEGENDARY

Legendary e-magazine is published by Australia's North West Tourism (ANW) - Regional Tourism Organisation for the Kimberley & Pilbara. All information was correct at time of publication as of 31 August 2024. ©2024 Australia's North West. All rights reserved. www.australiasnorthwest.com

Image credits to Tourism Western Australia, Tourism Australia, and Australia's North West.



Publication disclaimer. Information supplied by others in this guide is published in good faith. While every effort is made to ensure accuracy, Australia's North West Tourism takes no responsibility for inadvertent errors or omissions.

Produced by Fred&Co Digital Advertising. www.fredandcodigital.com